



HEALTH CARE  
COST INSTITUTE

# 2021 Health Care Cost & Utilization Report Chartbook





# HCCUR 2021 Chartbook Table of Contents

Figure 1: Cumulative Percent Change in Spending per Person, Utilization, and Price | [6](#)

Figure 2: Annual Percent Change in Spending per Person, Utilization, and Price | [6](#)

Figure 3: Share of Spending per Person in 2021 | [7](#)

Figure 4: Cumulative Percent Change in Spending per Person, Utilization, and Price by Service | [8](#)

Figure 5: Annual Spending per Person by Service | [9](#)

Figure 6: Annual Change in Spending per Person by Service | [9](#)

Figure 7: Annual Percent Change in Spending per Person, Utilization and Price by Service | [10](#)

Figure 8: 2021 ESI Age Distribution | [11](#)

Figure 9: Spending per Person in 2021 by Age and Sex | [12](#)

Figure 10: Cumulative Percent Change in Total and Out-of-Pocket Spending per Person | [13](#)

Figure 11: Total and Out-of-Pocket Spending per Person | [13](#)

Figure 12: Share of Out-of-Pocket Spending by Service | [14](#)

Figure 13: Cumulative Change in Total Spending per Person by Contributing Factors | [15](#)

Figure 14: Cumulative Change in Total Spending per Person by Contributing Factors and Service | [16](#)



# HCCUR 2021 Chartbook Table of Contents

Figure 15: Cumulative Percent Change in Spending, Utilization and Price Compared to Constant Growth | [17](#)

Figure 16: Cumulative Percent Change in Spending, Utilization and Price for Select Services | [18](#)

Figure 17: Share of Inpatient Facility Spending | [19](#)

Figure 18: Cumulative Change in Inpatient Facility Spending per Person | [20](#)

Figure 19: Cumulative Percent Change in Inpatient Facility Spending per Person, Utilization and Price for Select Services | [21](#)

Figure 20: Share of Inpatient Admissions Utilization | [22](#)

Figure 21: Average Prices of Select Inpatient Admissions in 2017 and 2021 | [23](#)

Figure 22: Average Out-of-Pocket Payments for Select Inpatient Admissions in 2017 and 2021 | [23](#)

Figure 23: Share of Outpatient Facility Spending | [24](#)

Figure 24: Cumulative Change in Outpatient Facility Spending per Person | [25](#)

Figure 25: Cumulative Percent Change in Outpatient Facility Spending per Person, Utilization and Price for Select Services | [26](#)

Figure 26: Share of Outpatient Services Utilization | [27](#)



# HCCUR 2021 Chartbook Table of Contents

Figure 27: Share of Outpatient Procedures Facility Spending | [28](#)

Figure 28: Cumulative Percent Change in Outpatient Procedures Facility Spending per Person, Utilization and Price for Select Services | [29](#)

Figure 29: Average Prices of Select Outpatient Facility Services in 2017 and 2021 | [30](#)

Figure 30: Average Out-of-Pocket Payments for Select Outpatient Facility Services in 2017 and 2021 | [30](#)

Figure 31: Share of Professional Services Spending | [31](#)

Figure 32: Cumulative Change in Professional Services Spending per Person | [32](#)

Figure 33: Cumulative Percent Change in Professional Services Spending per Person, Utilization and Price for Select Services | [33](#)

Figure 34: Share of Professional Services Utilization | [34](#)

Figure 35: Average Prices of Select Professional Services in 2017 and 2021 | [35](#)

Figure 36: Average Out-of-Pocket Payments for Select Professional Services in 2017 and 2021 | [35](#)

Figure 37: Share of Prescription Drug Spending | [36](#)

Figure 38: Cumulative Change in Prescription Drug Spending per Person | [37](#)



# HCCUR 2021 Chartbook Table of Contents

Figure 39: Cumulative Percent Change in Prescription Drug Spending per Person, Utilization and Price for Select Drugs | [38](#)

Figure 40: Share of Prescription Drug Days Supplied | [39](#)

Figure 41: Average Point-of-Sale Prices for Prescription Drugs 30-Day Supply in 2017 and 2021 | [40](#)

Figure 42: Average Out-of-Pocket Payments for Prescription Drugs 30-Day Supply in 2017 and 2021 | [40](#)

Figure 43: Share of Prescription Drug Utilization, Spending, and Out-of-Pocket Spending on Brand and Generic Drugs in 2021 | [41](#)

Figure 44: Cumulative Percent Change in Brand and Generic Prescription Drug Point-of-Sale Prices | [42](#)

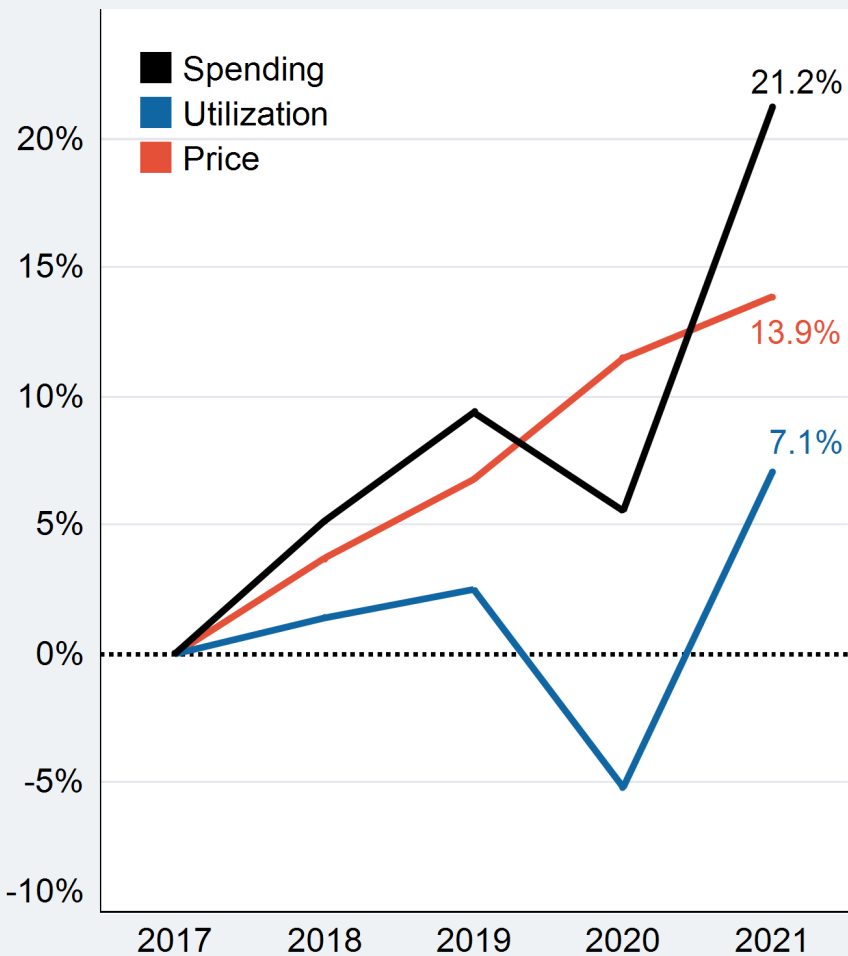
Figure 45: Total Spending per Person by State in 2021 | [43](#)

Figure 46: Inpatient Facility Spending by Age and Sex in 2021 | [44](#)

Figure 47: Share of Professional E&M Services Spending | [45](#)

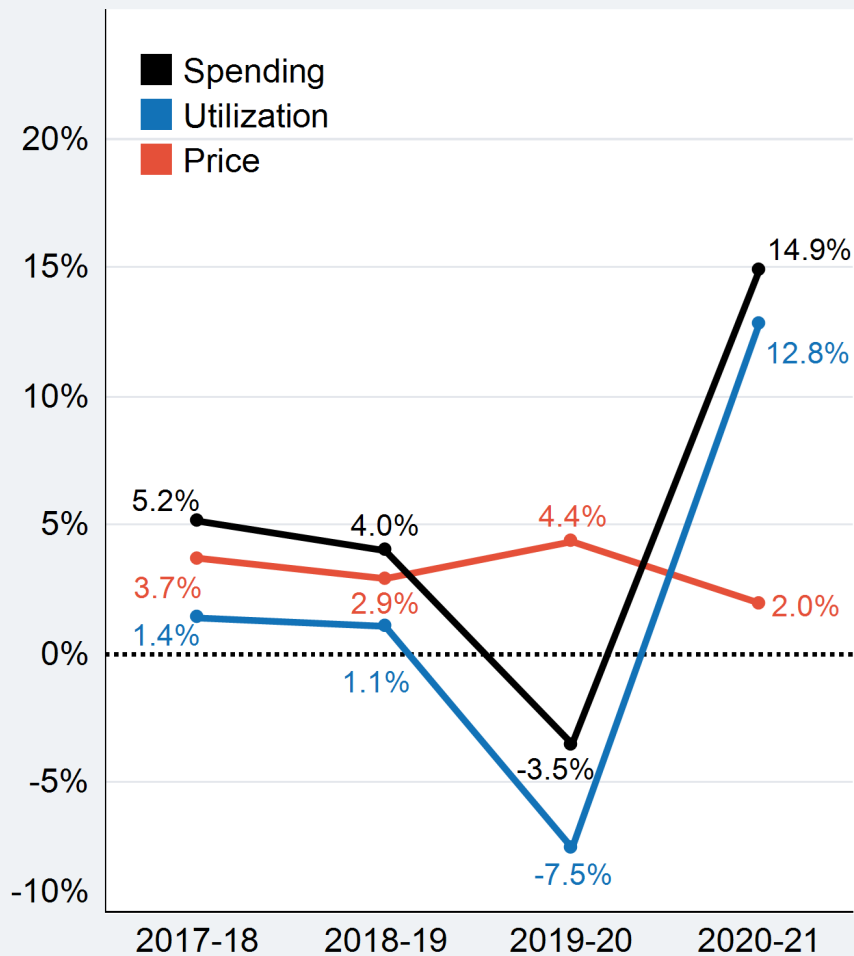


**Figure 1: Cumulative Percent Change in Spending per Person, Utilization, and Price**



Health Care Cost & Utilization Report 2021  
healthcostinstitute.org

**Figure 2: Annual Percent Change in Spending per Person, Utilization, and Price**



Health Care Cost & Utilization Report 2021  
healthcostinstitute.org



**Figure 3:** Share of Spending per Person in 2021

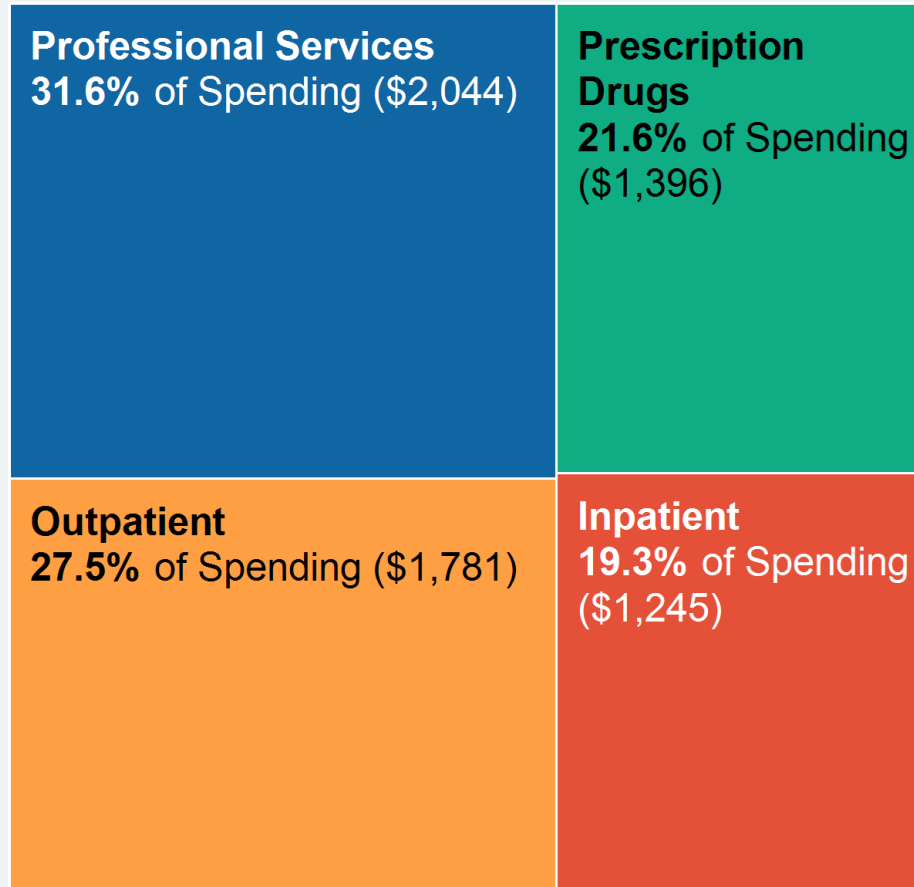




Figure 4: Cumulative Percent Change in Spending per Person, Utilization, and Price by Service

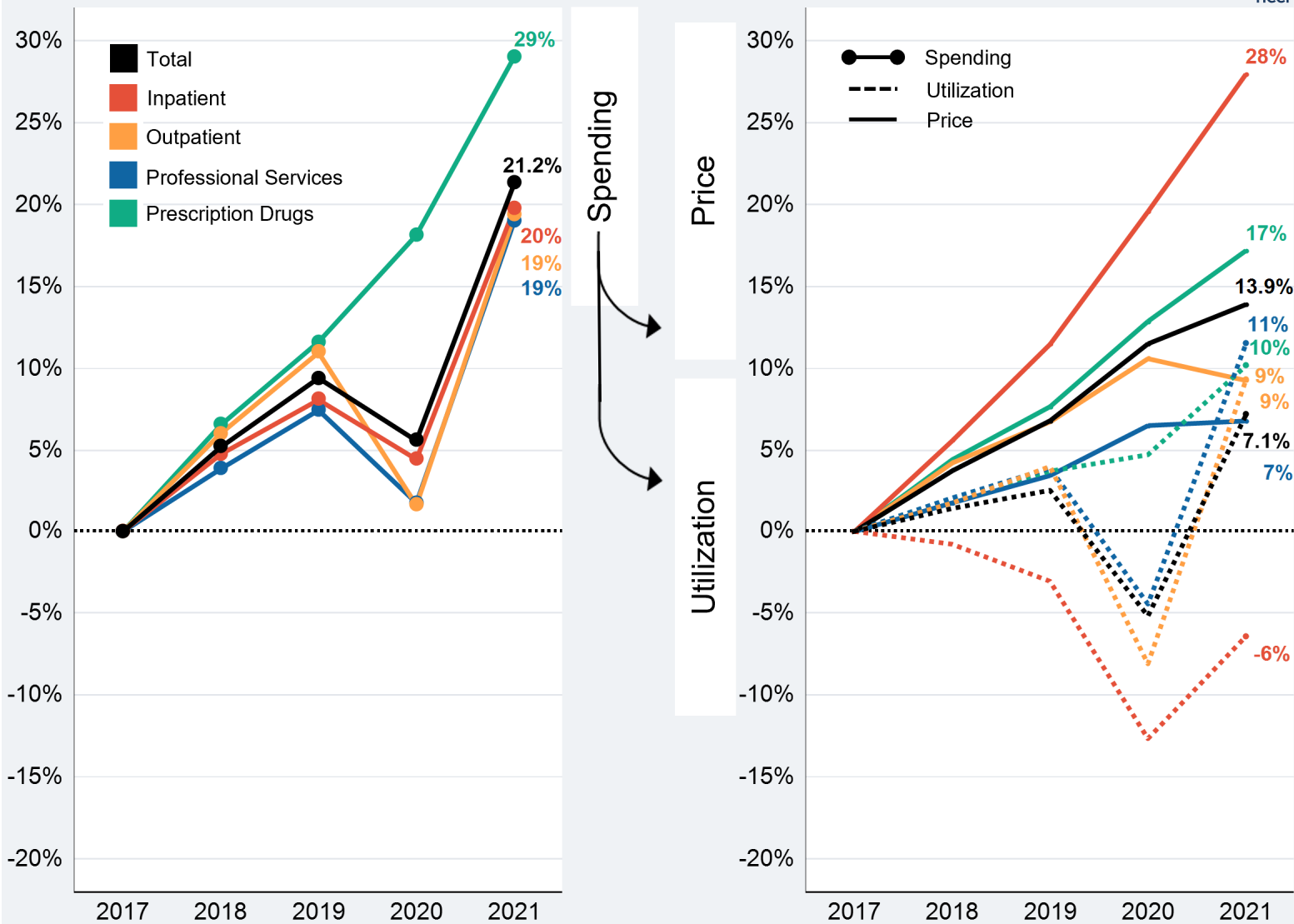
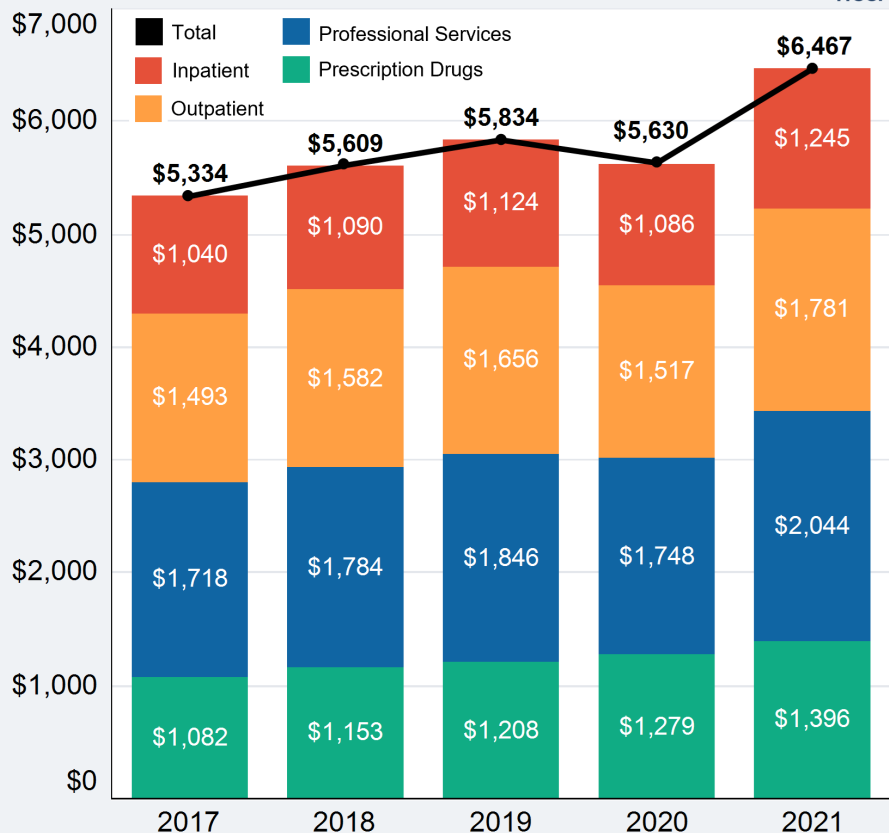




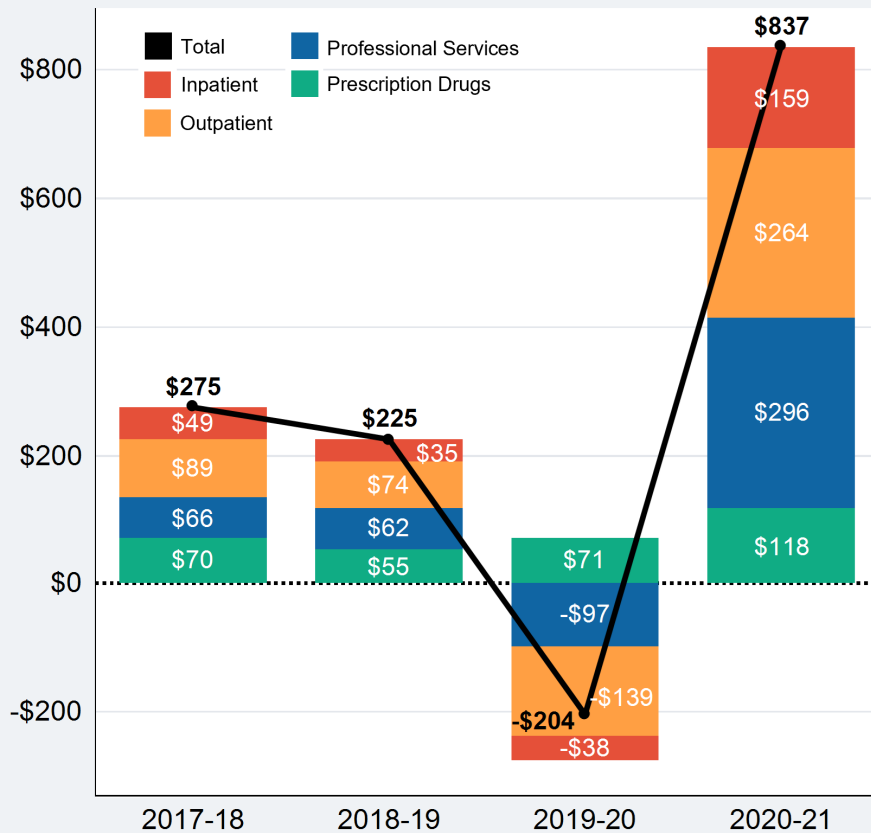


Figure 5: Annual Spending per Person by Service



Health Care Cost & Utilization Report 2021 | healthcostinstitute.org

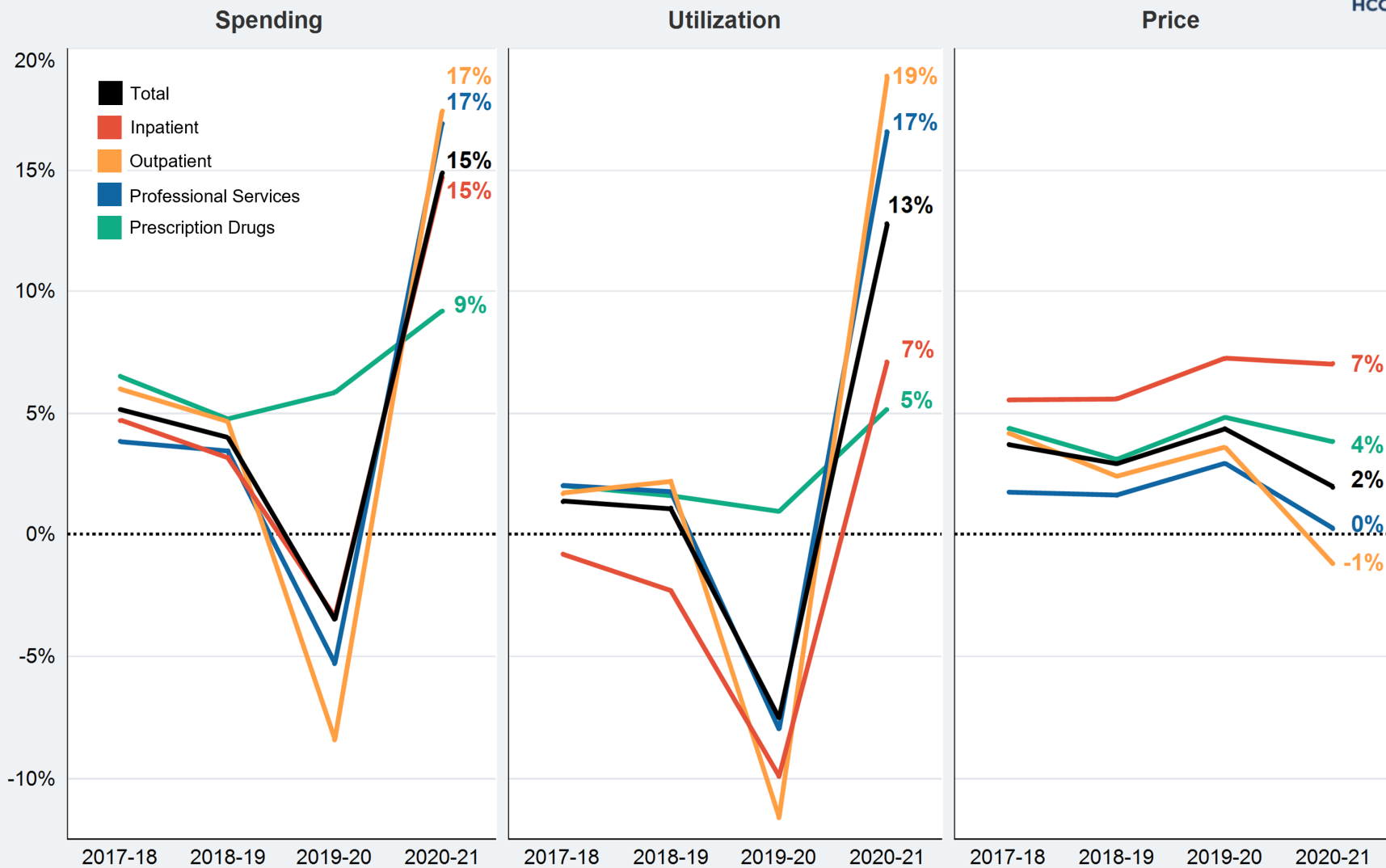
Figure 6: Annual Change in Spending per Person by Service



Health Care Cost & Utilization Report 2021 | healthcostinstitute.org



Figure 7: Annual Percent Change in Spending per Person, Utilization, and Price by Service



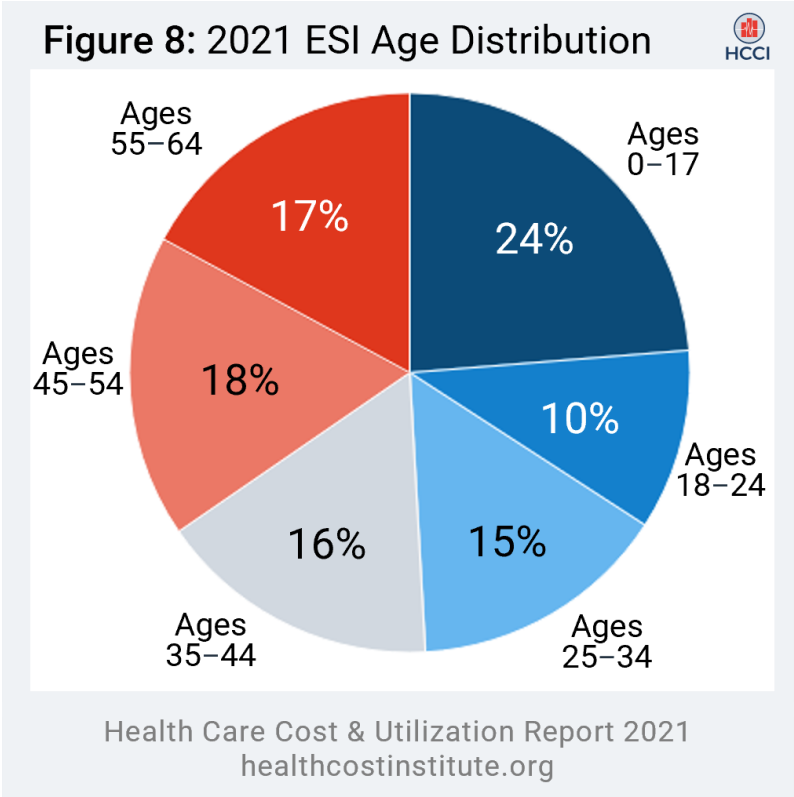


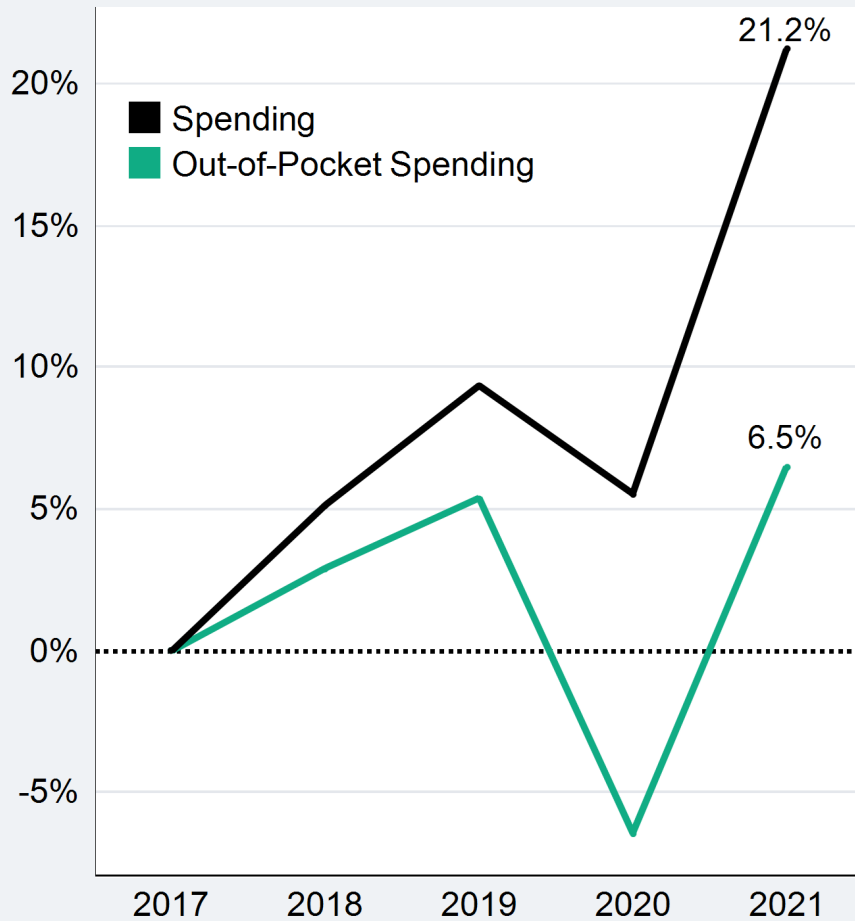


Figure 9: Spending per Person in 2021 by Age and Sex



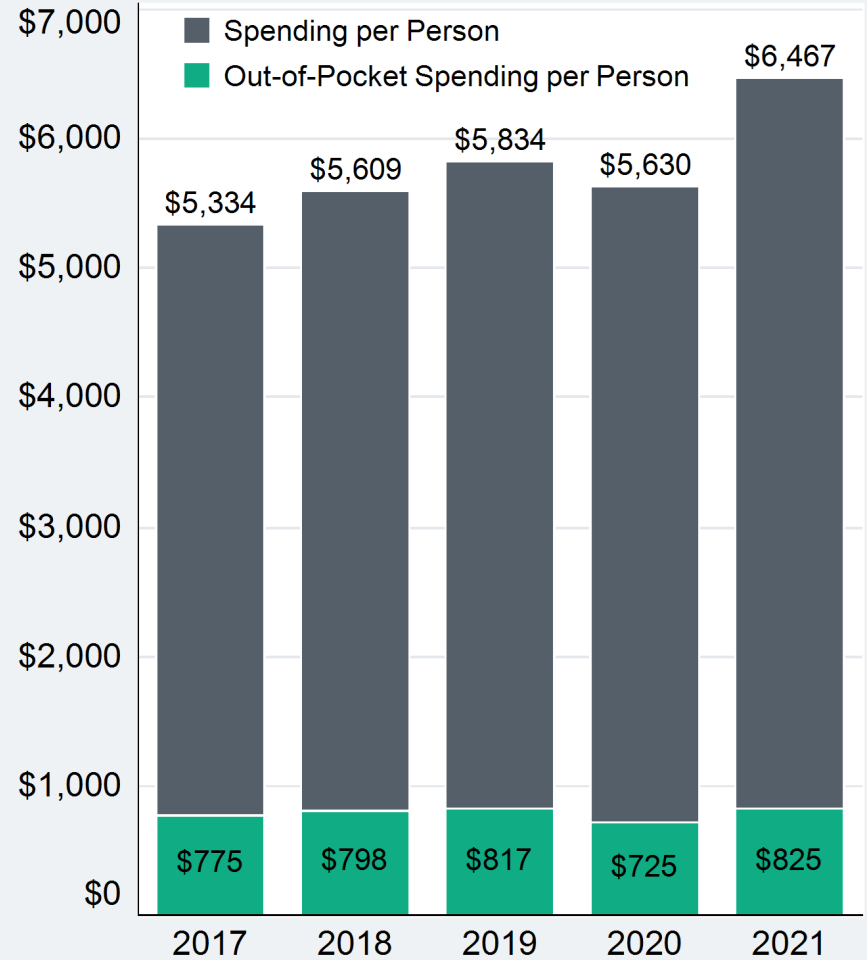


**Figure 10: Cumulative Percent Change in Spending per Person and Out-of-Pocket Spending per Person**



Health Care Cost & Utilization Report 2021  
healthcostinstitute.org

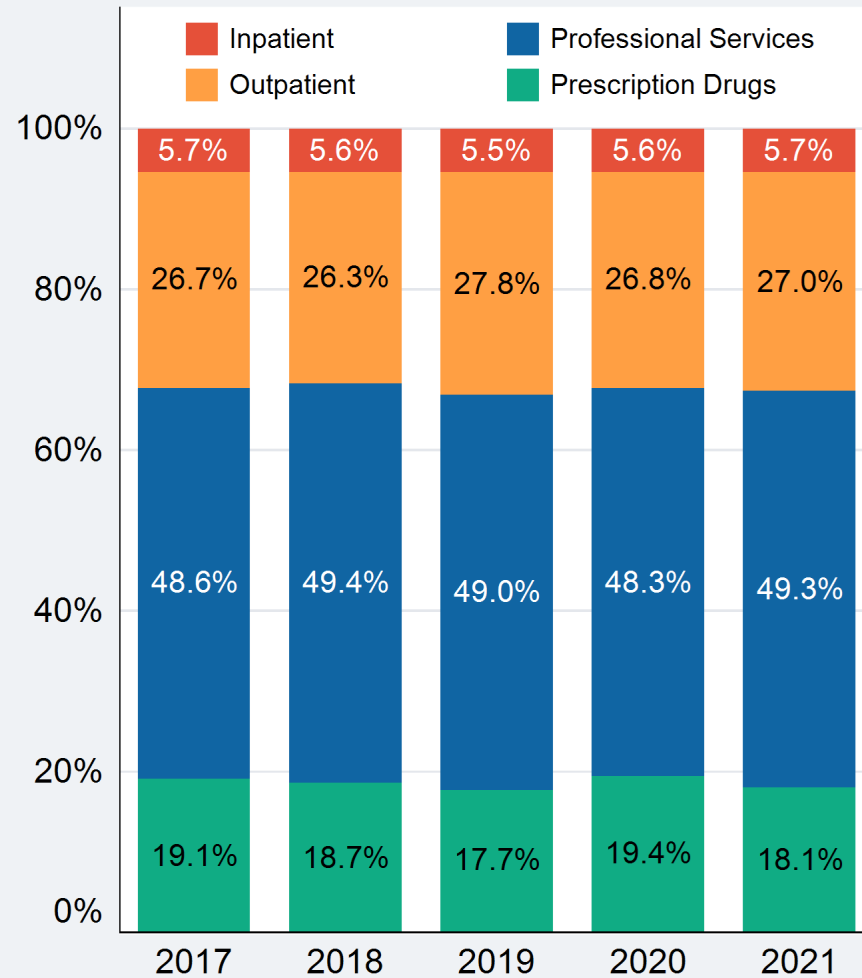
**Figure 11: Total and Out-of-Pocket Spending per Person**



Health Care Cost & Utilization Report 2021  
healthcostinstitute.org




**Figure 12: Share of Out-of-Pocket Spending by Service**



Health Care Cost & Utilization Report 2021  
healthcostinstitute.org



**Figure 13:** Cumulative Change in Total Spending per Person and Contributing Factors 

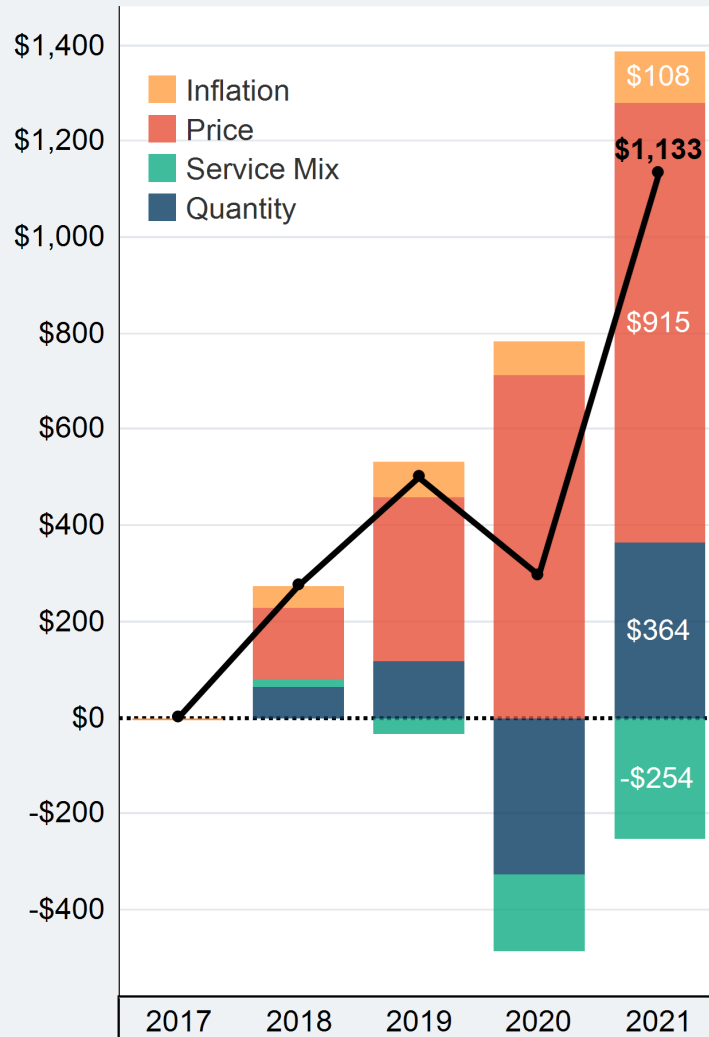
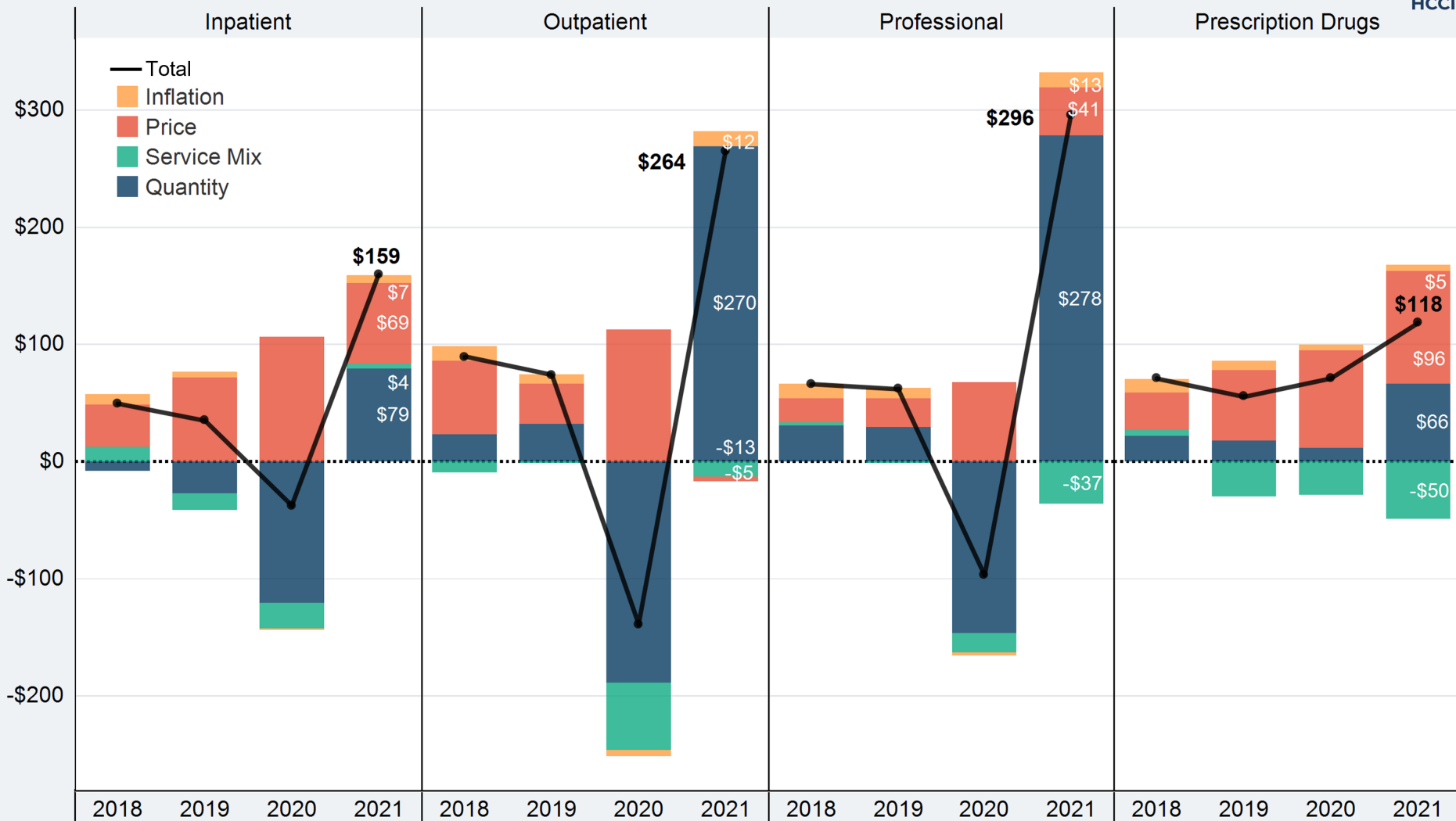




Figure 14: Cumulative Change in Total Spending per Person and Contributing Factors by Service





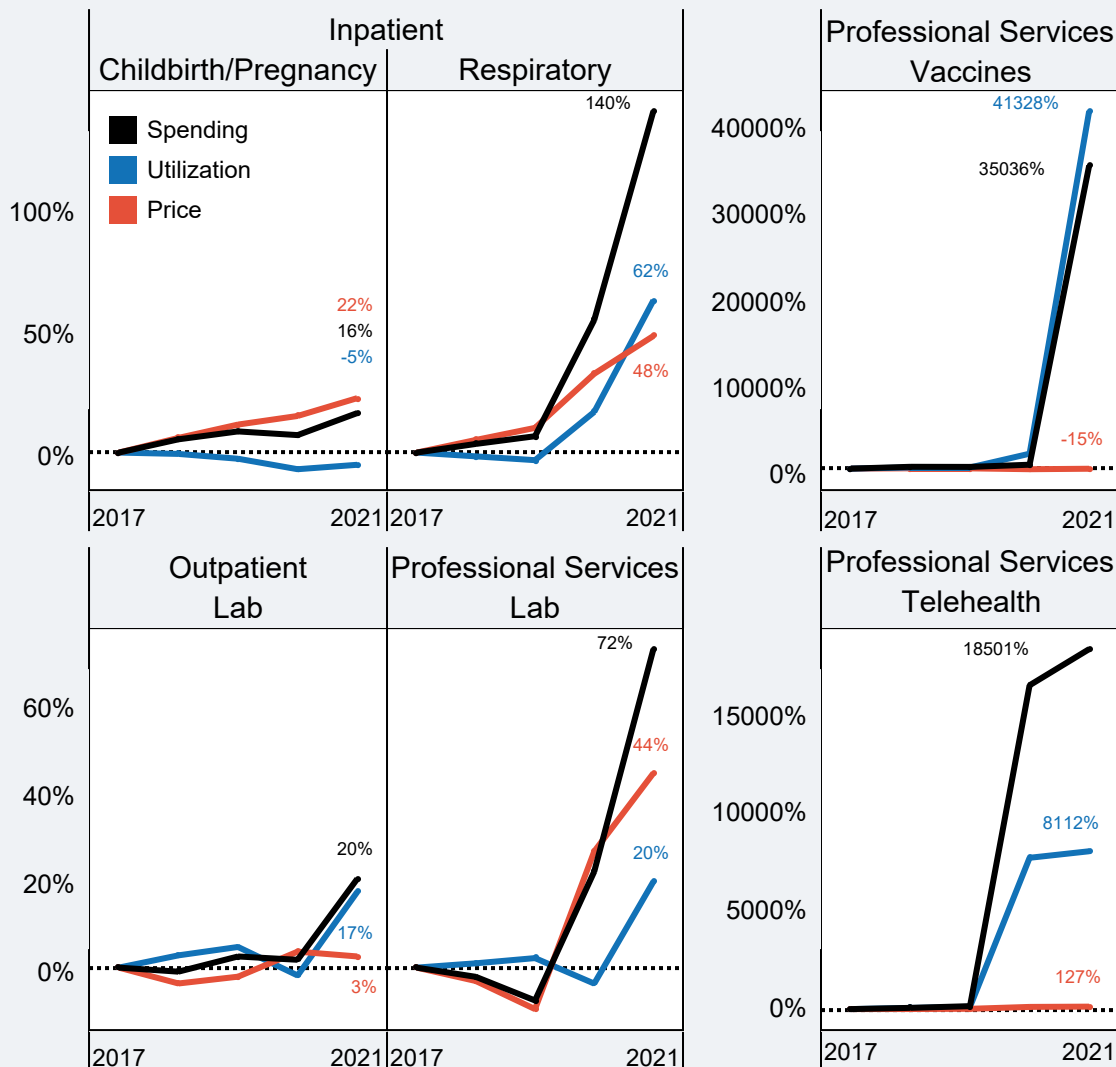


**Figure 15:** Cumulative Percent Change in **Spending per Person**, **Utilization** and **Price** Compared to Constant Growth



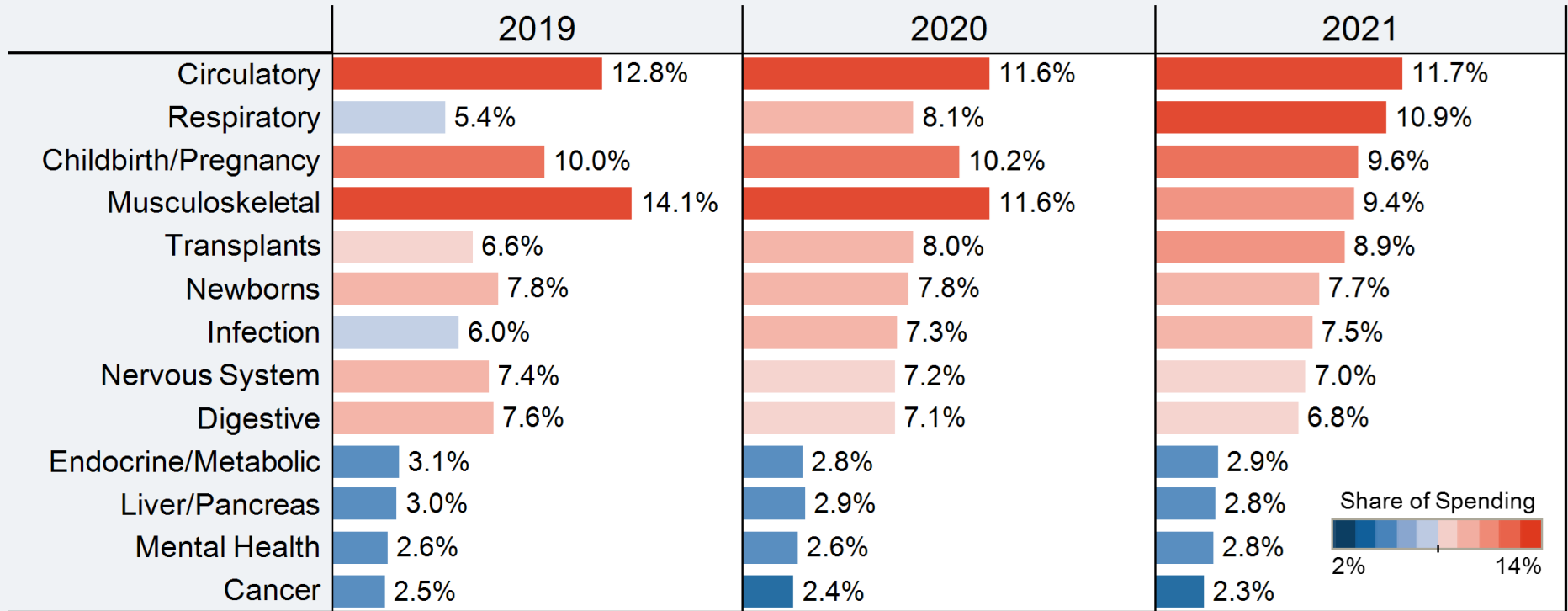


**Figure 16: Cumulative Percent Change in Spending per Person, Utilization, and Price for Select Services**





**Figure 17: Share of Inpatient Facility Spending**





**Figure 18: Cumulative Change in Inpatient Facility Spending per Person**

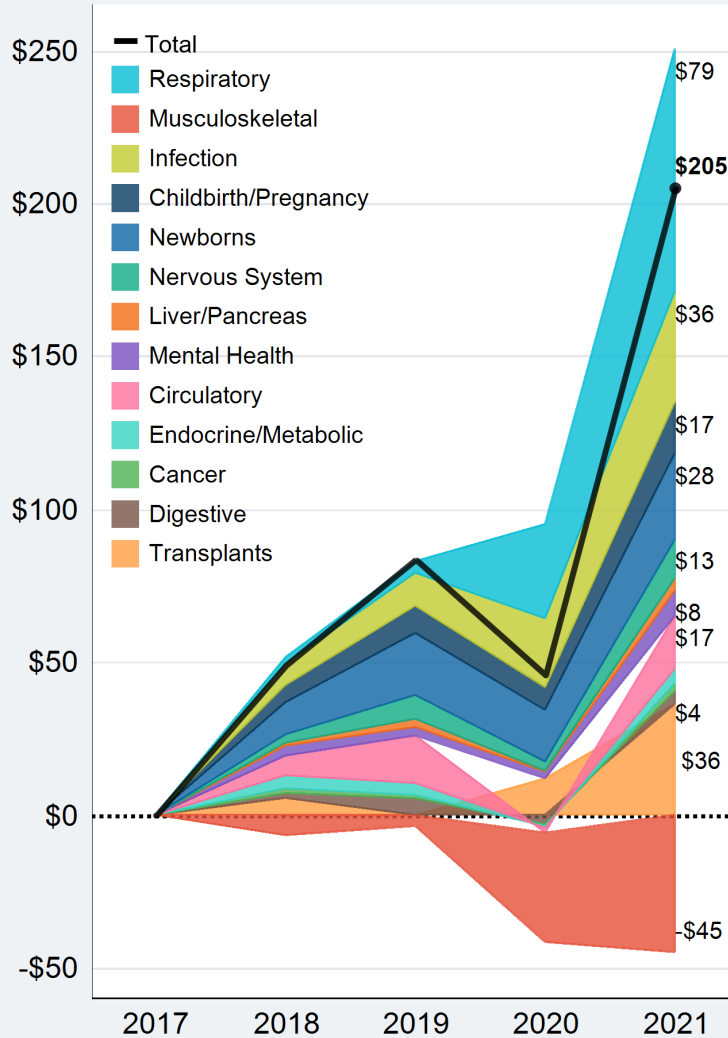
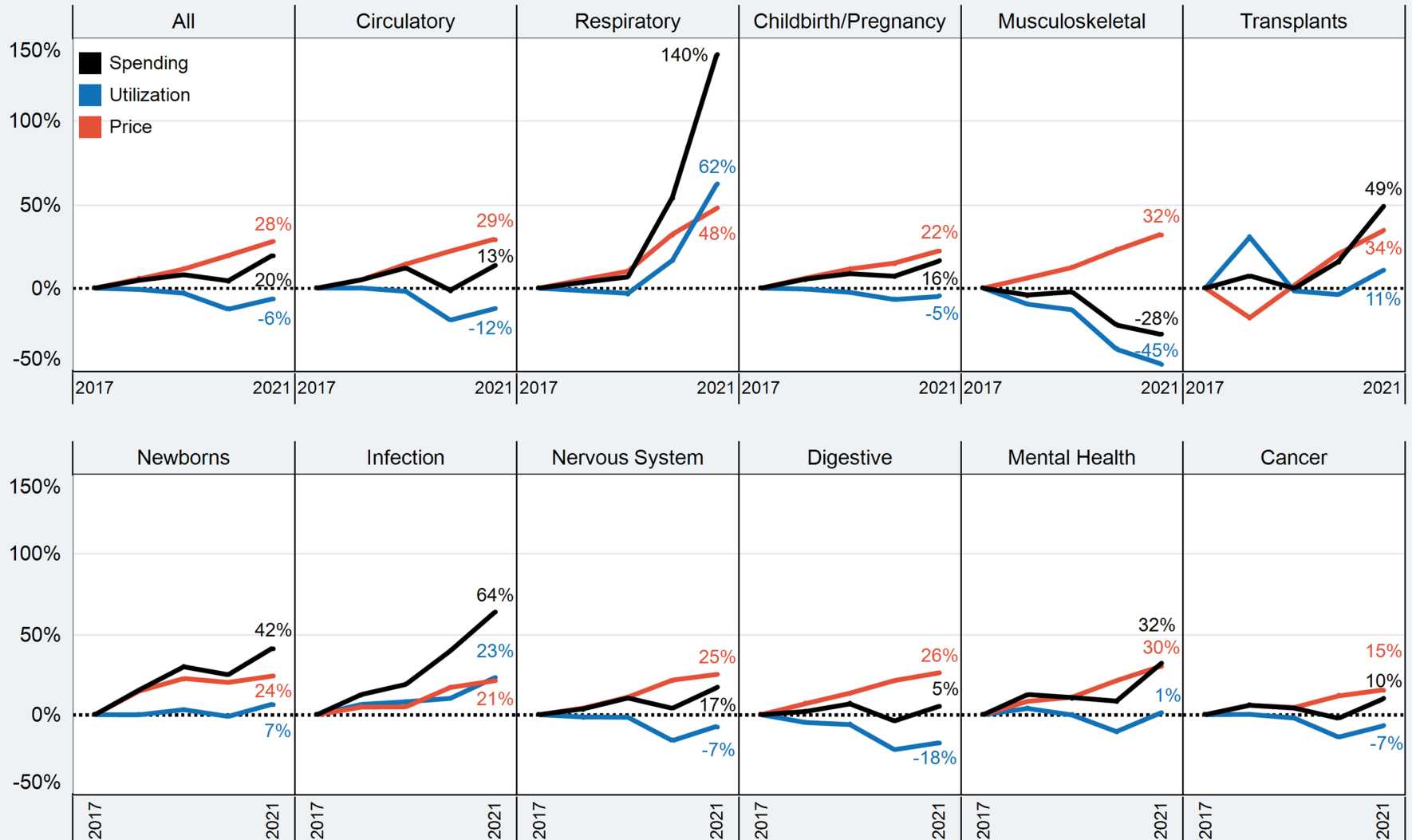




Figure 19: Cumulative Percent Change in Inpatient Facility Spending per Person, Utilization, and Price for Select Services





**Figure 20: Share of Inpatient Admissions Utilization**

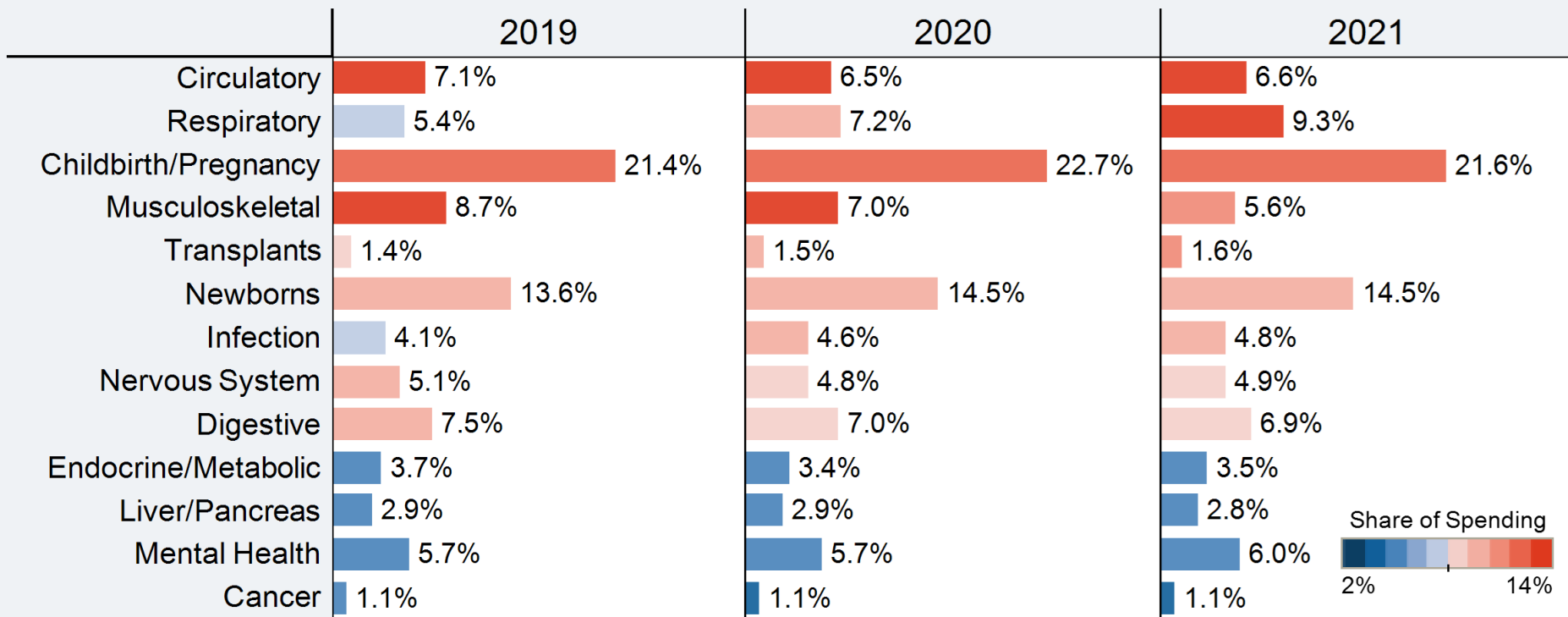




Figure 21: Average Prices of Select Inpatient Admissions in 2017 and 2021

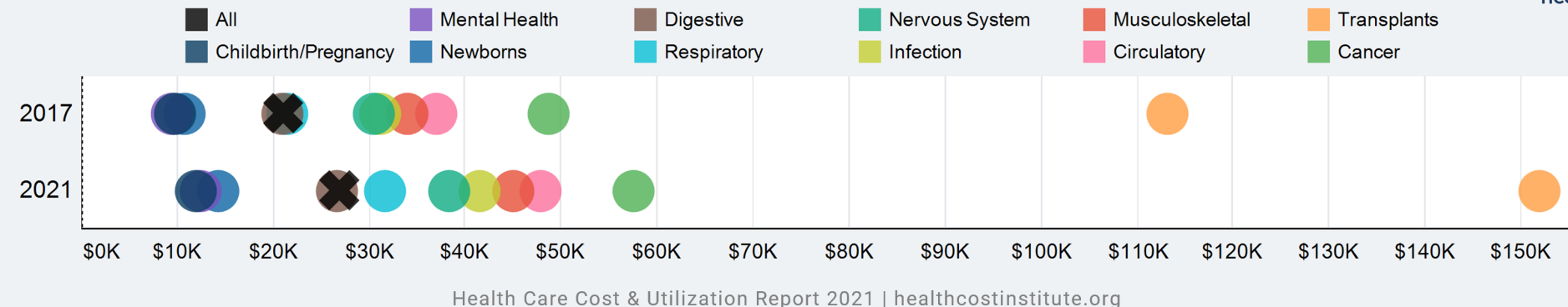


Figure 22: Average Out-of-Pocket Payments for Select Inpatient Admissions in 2017 and 2021

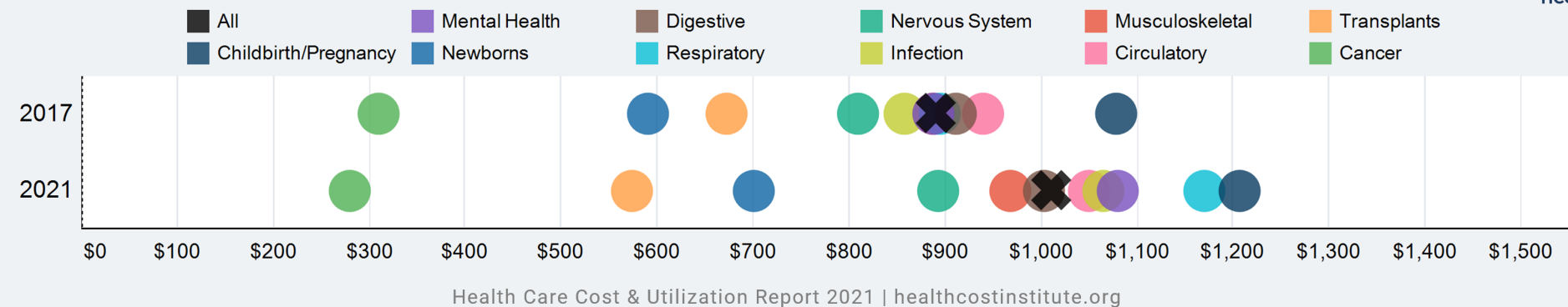
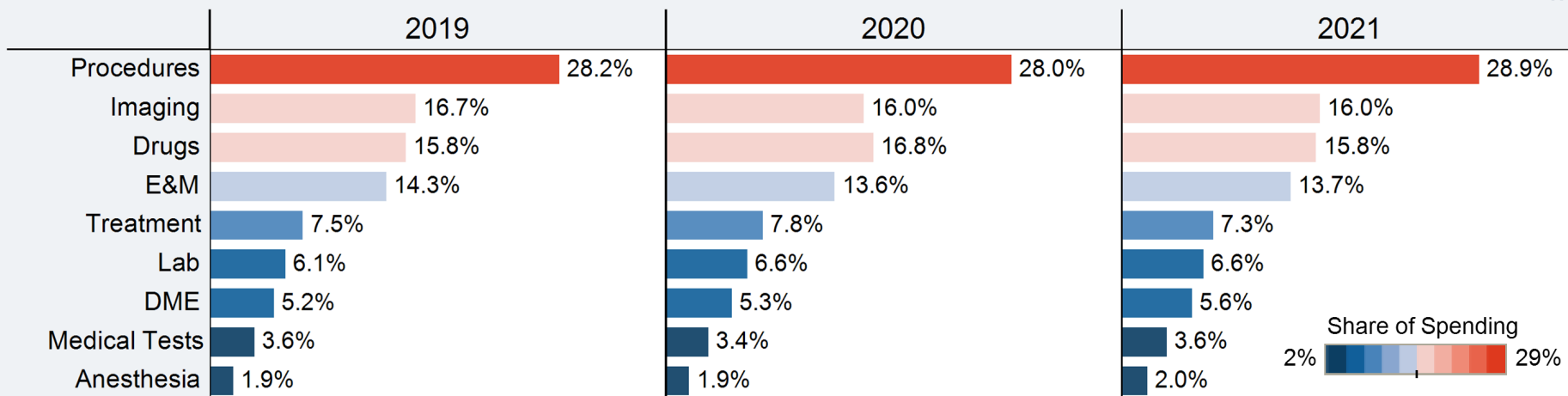




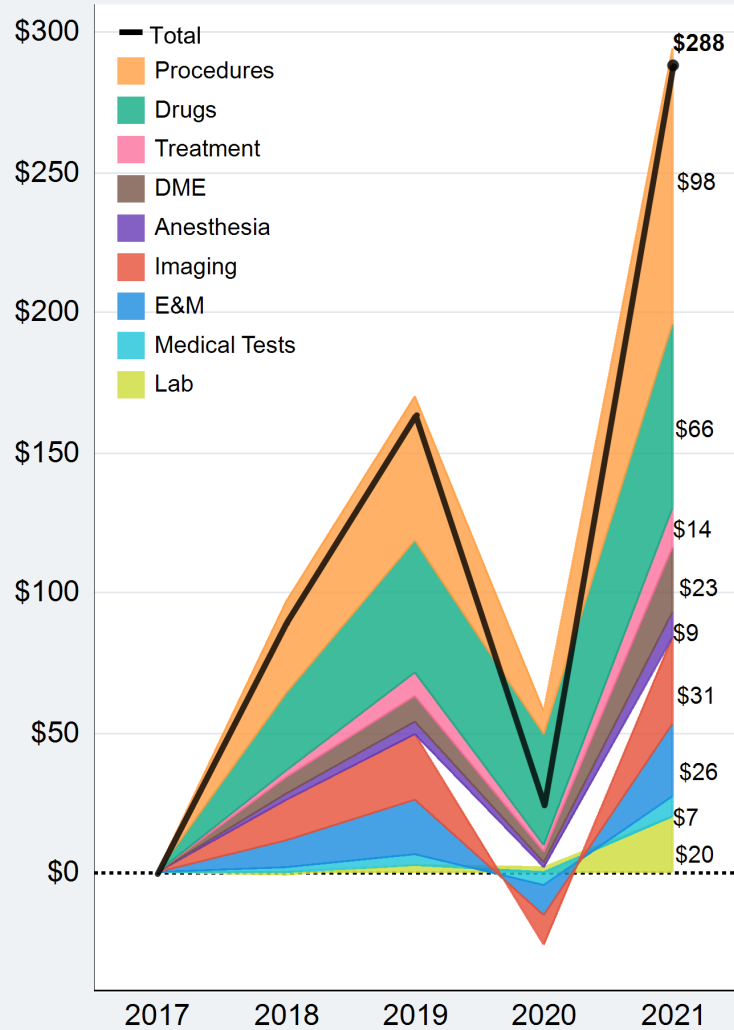
Figure 23: Share of Outpatient Facility Spending





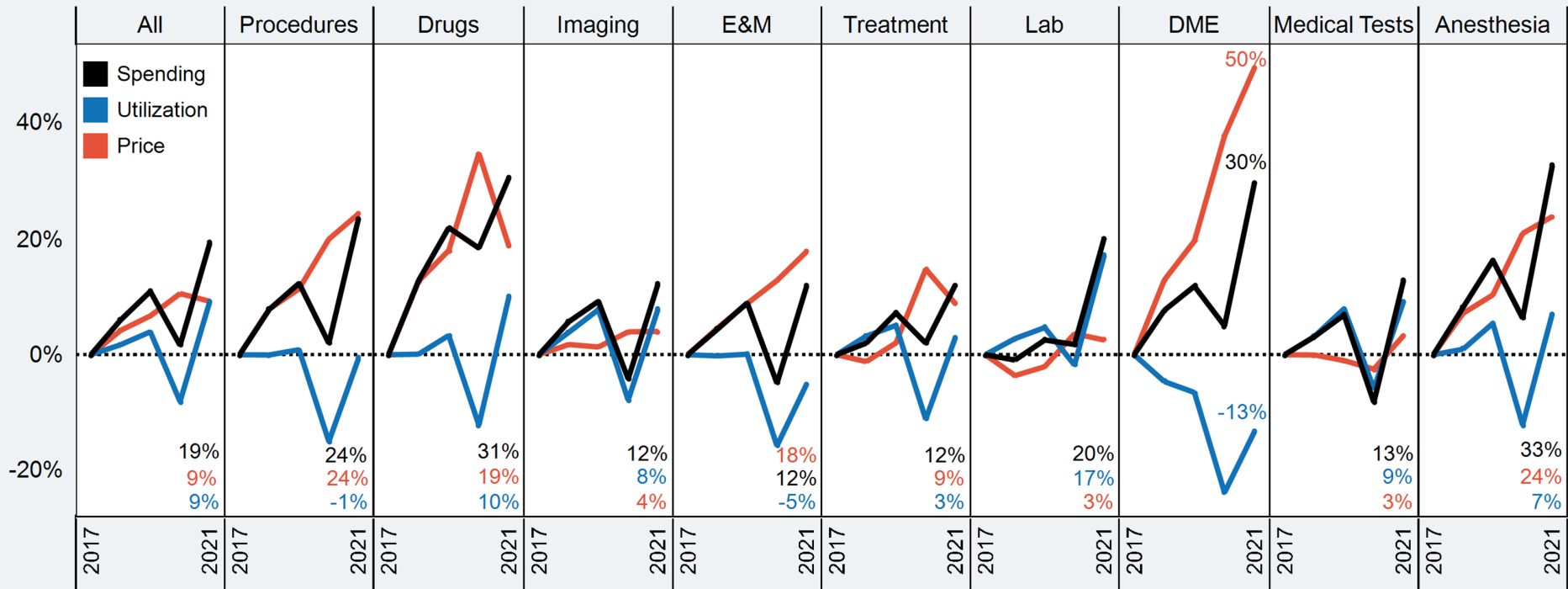


**Figure 24:** Cumulative Change in Outpatient Facility Spending per Person





**Figure 25:** Cumulative Percent Change in Outpatient Facility **Spending per Person**, **Utilization**, and **Price** for Select Services





**Figure 26:** Share of Outpatient Facility Services Utilization

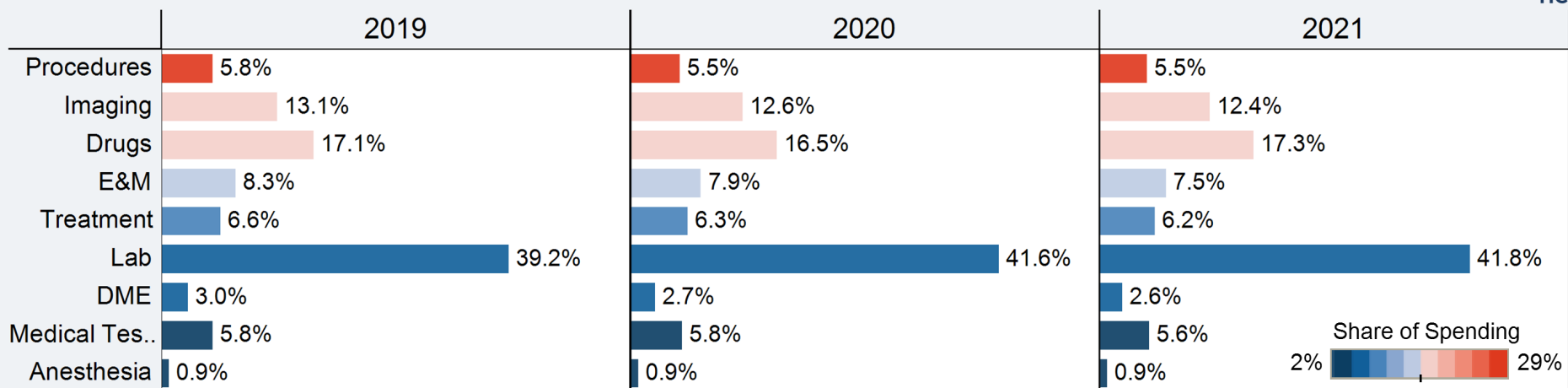




Figure 27: Share of Outpatient Procedures Facility Spending

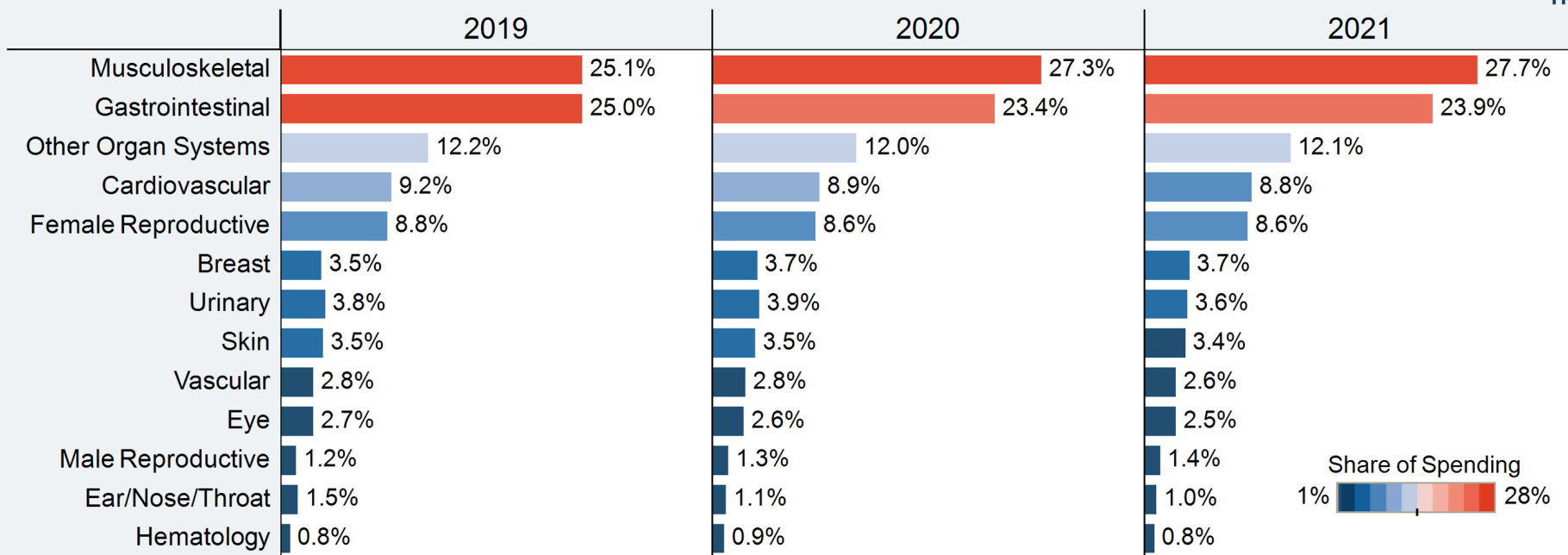
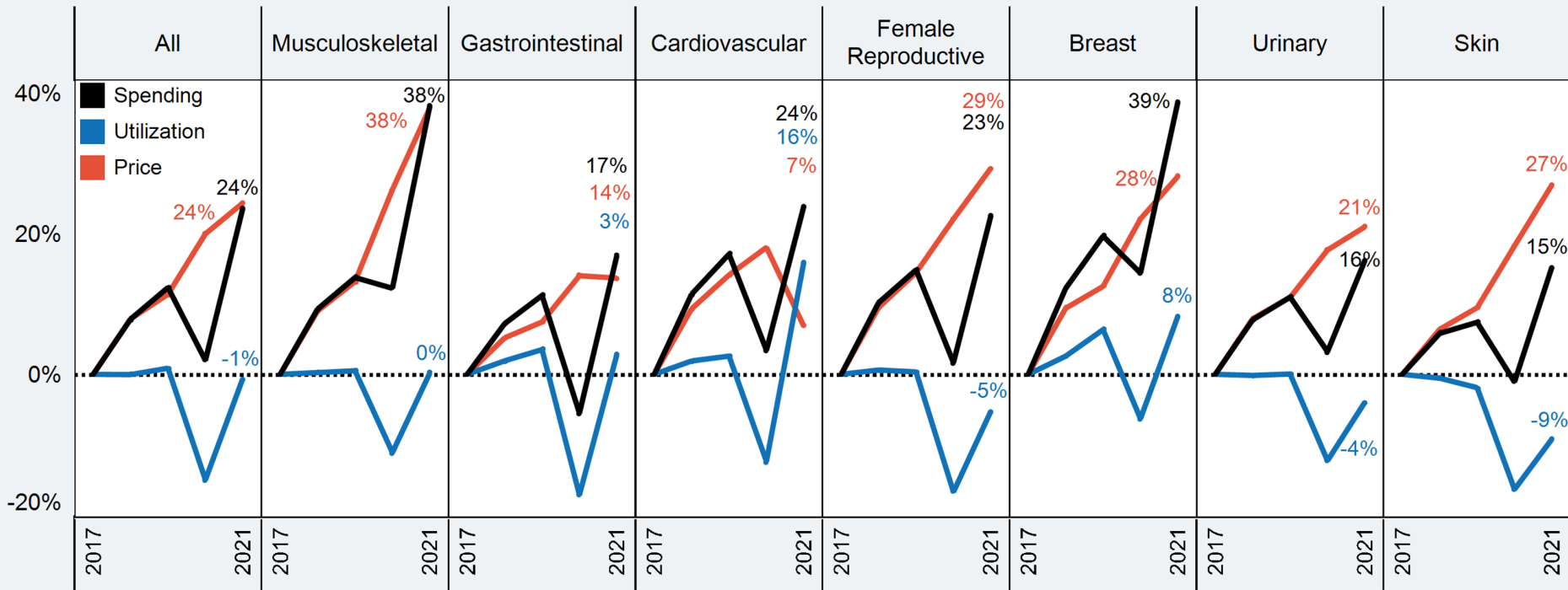




Figure 28: Cumulative Percent Change in Outpatient Procedures Facility Spending per Person, Utilization, and Price for Select Services



Health Care Cost & Utilization Report 2021 | healthcostinstitute.org



Figure 29: Average Prices of Select Outpatient Facility Services in 2017 and 2021

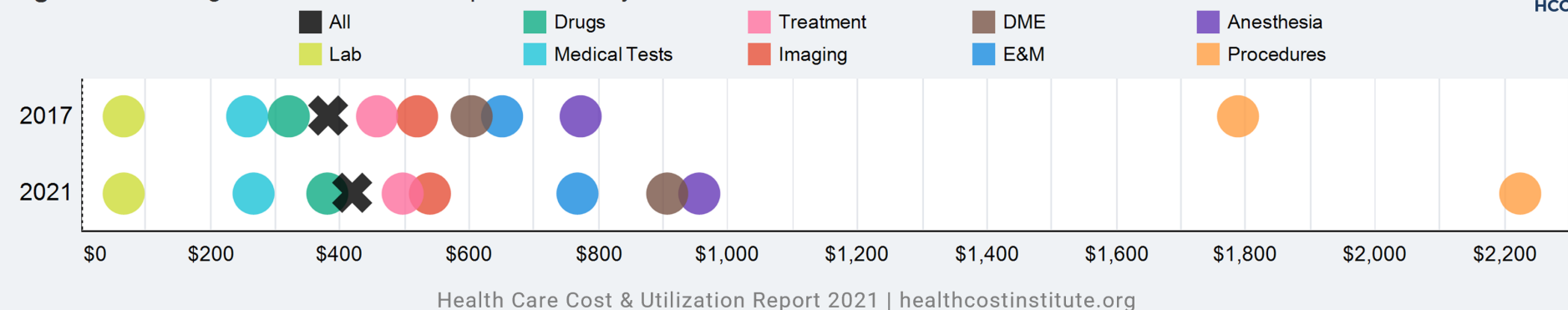
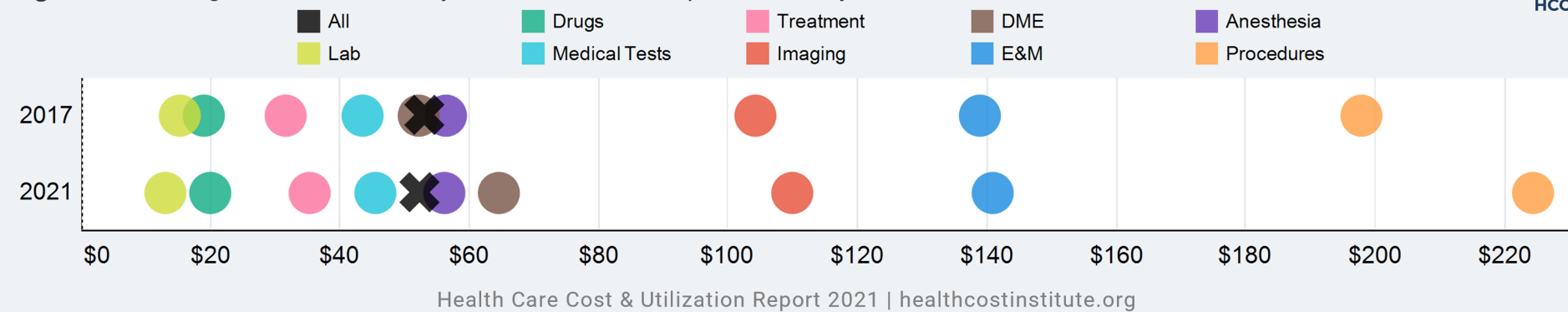
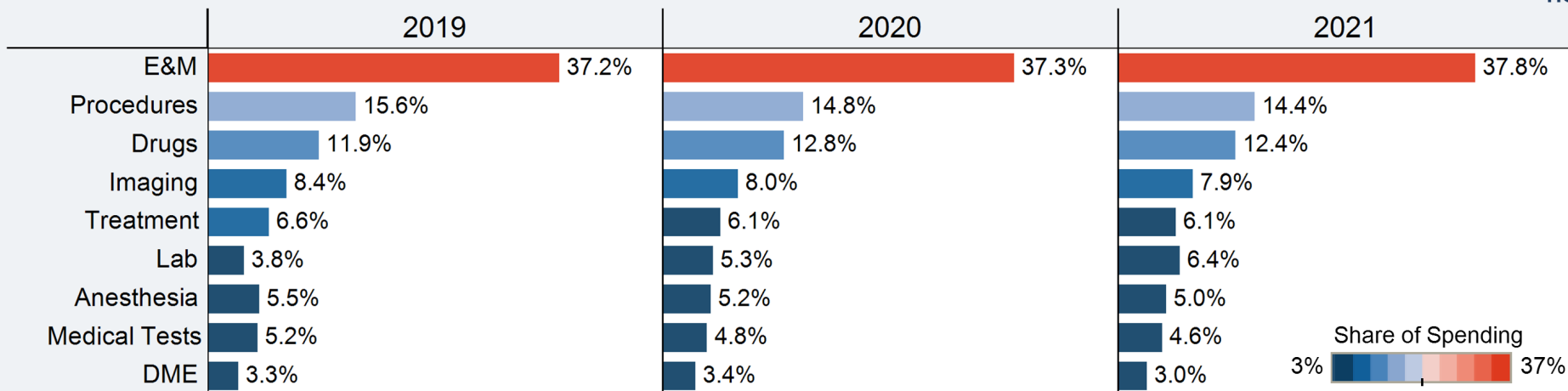


Figure 30: Average Out-of-Pocket Payments for Select Outpatient Facility Services in 2017 and 2021





**Figure 31: Share of Professional Services Spending**





**Figure 32:** Cumulative Change in Professional Services Spending per Person

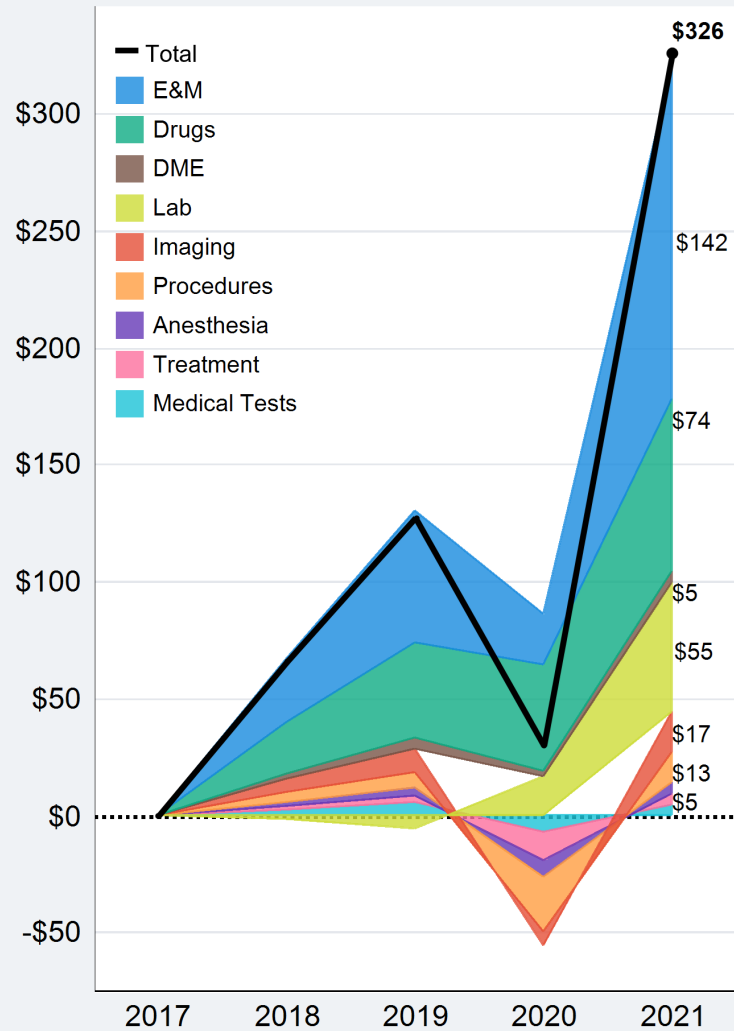
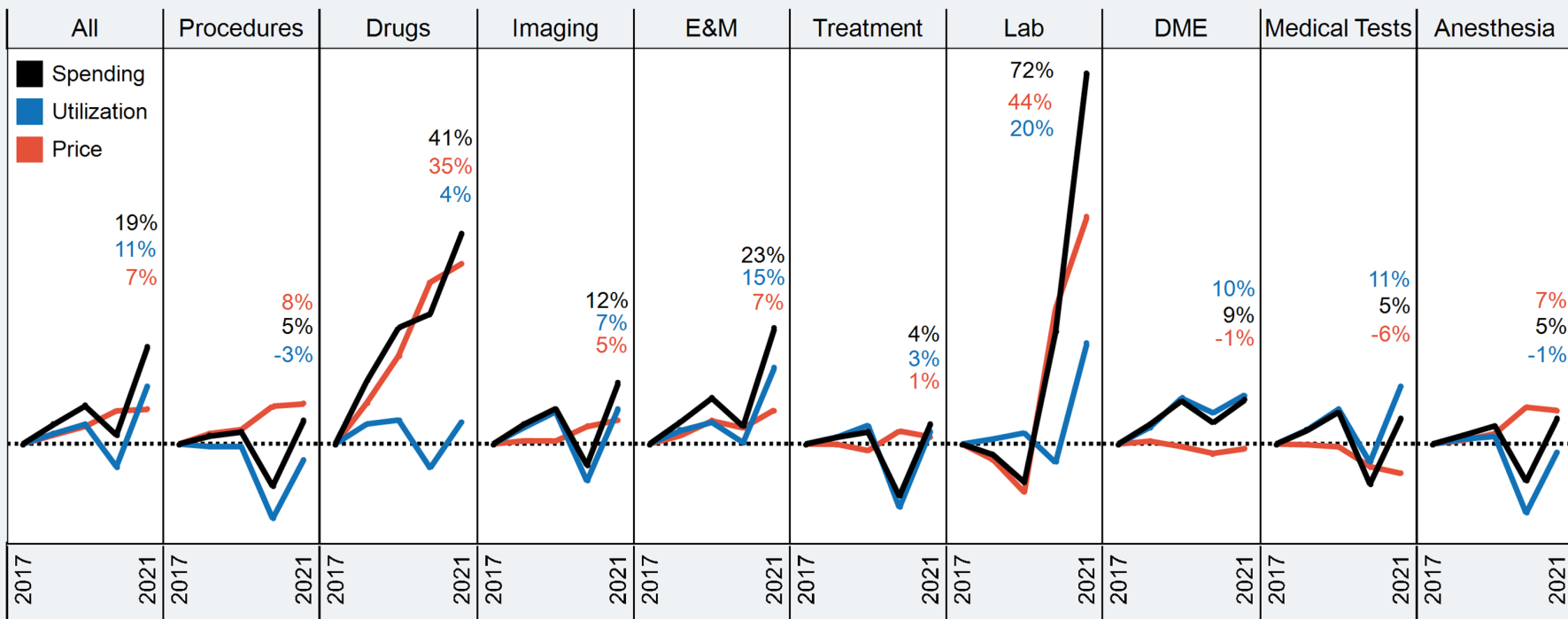






Figure 33: Cumulative Percent Change in Professional Services **Spending** per Person, **Utilization**, and **Price** for Select Services



Health Care Cost & Utilization Report 2021 | healthcostinstitute.org



Figure 34: Share of Professional Services Utilization

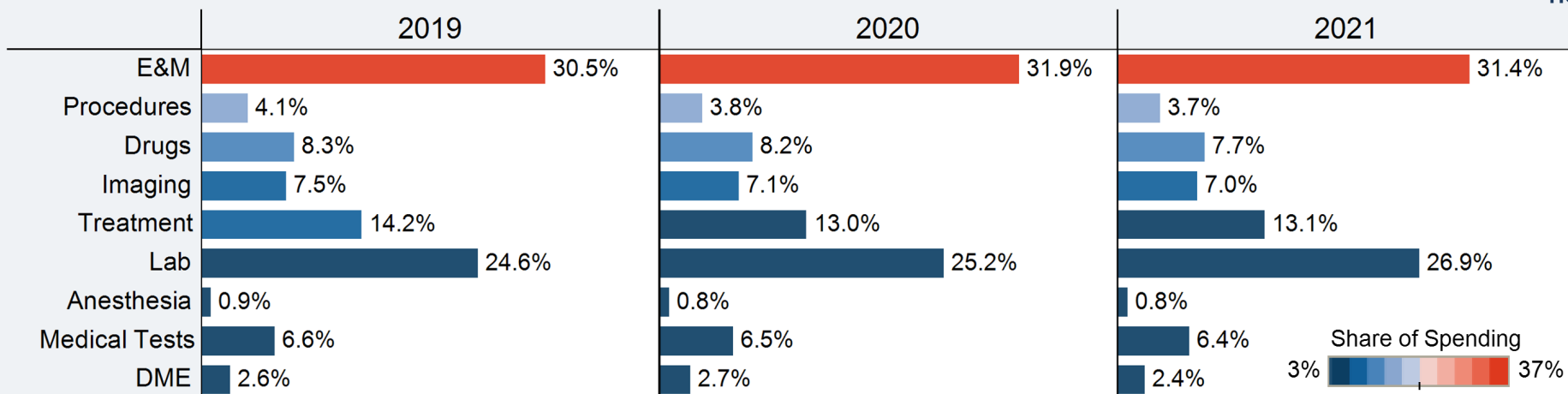




Figure 35: Average Prices of Select Professional Services in 2017 and 2021

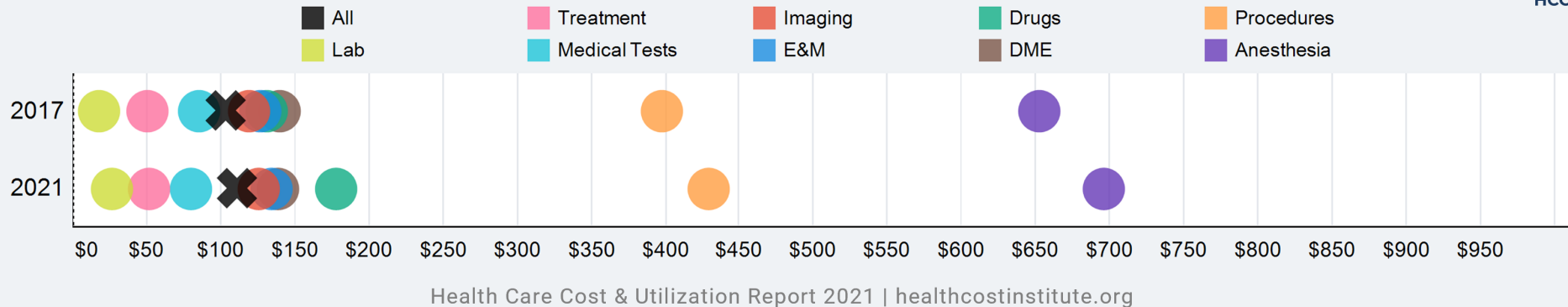


Figure 36: Average Out-of-Pocket Payments for Select Professional Services in 2017 and 2021

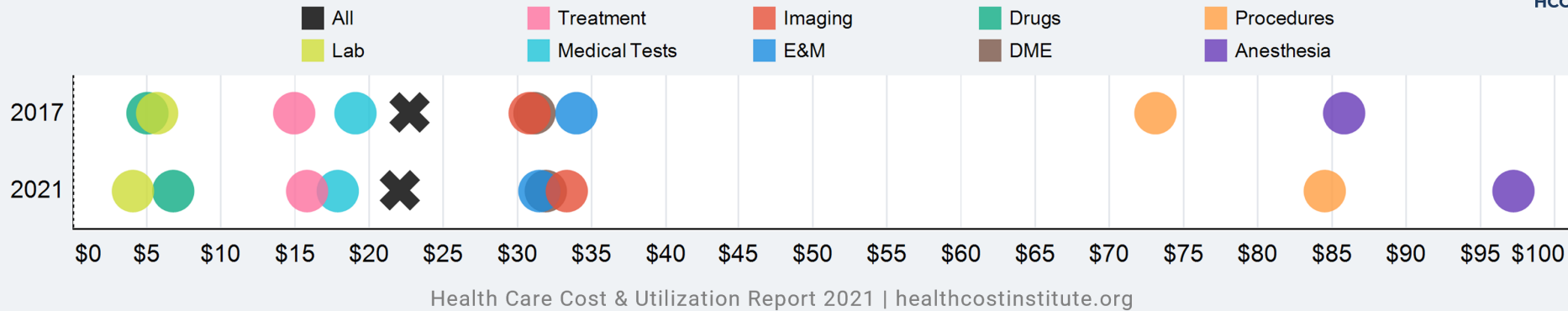
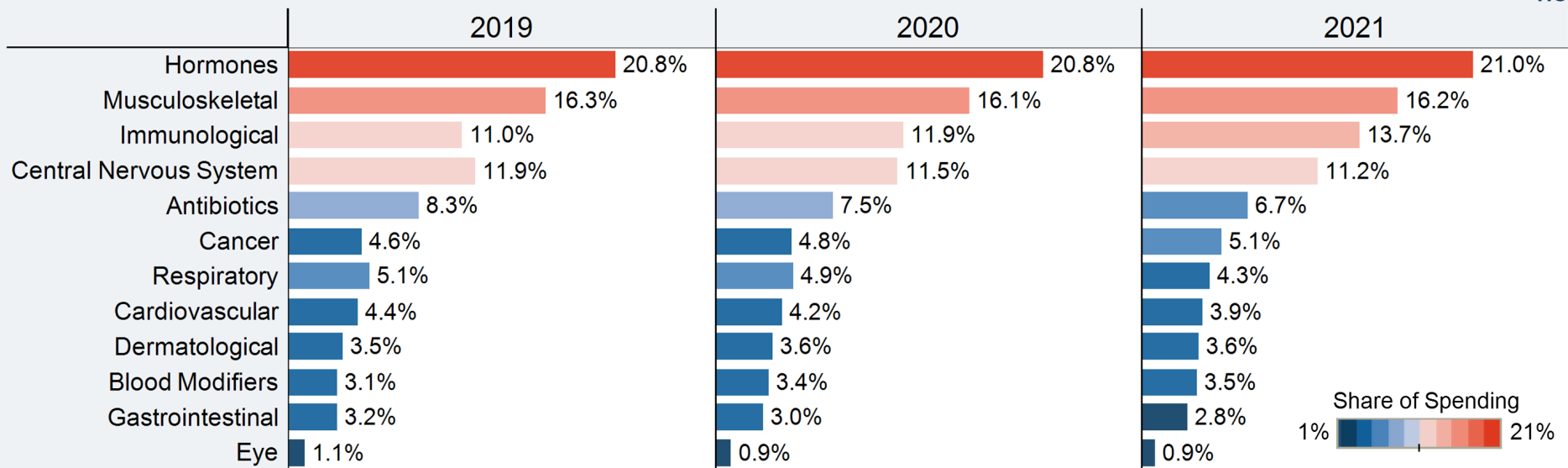


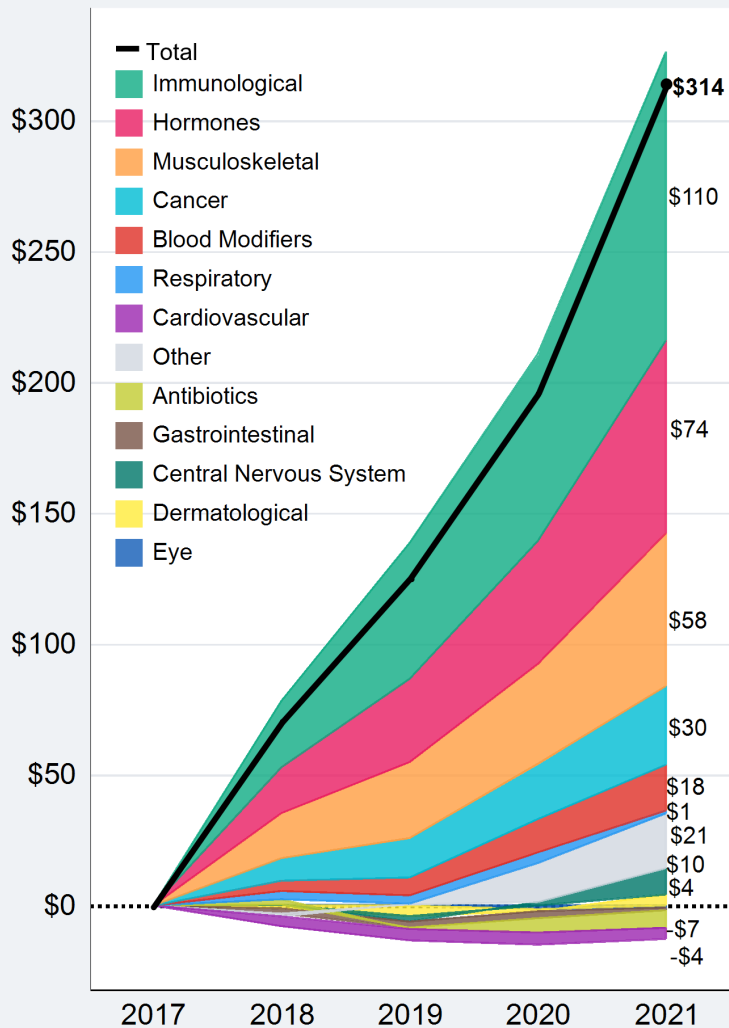


Figure 37: Share of Prescription Drug Spending





**Figure 38:** Cumulative Change in Prescription Drug Spending per Person





**Figure 39: Cumulative Percent Change in Prescription Drug Spending per Person, Utilization, and Price for Select Drug Categories**

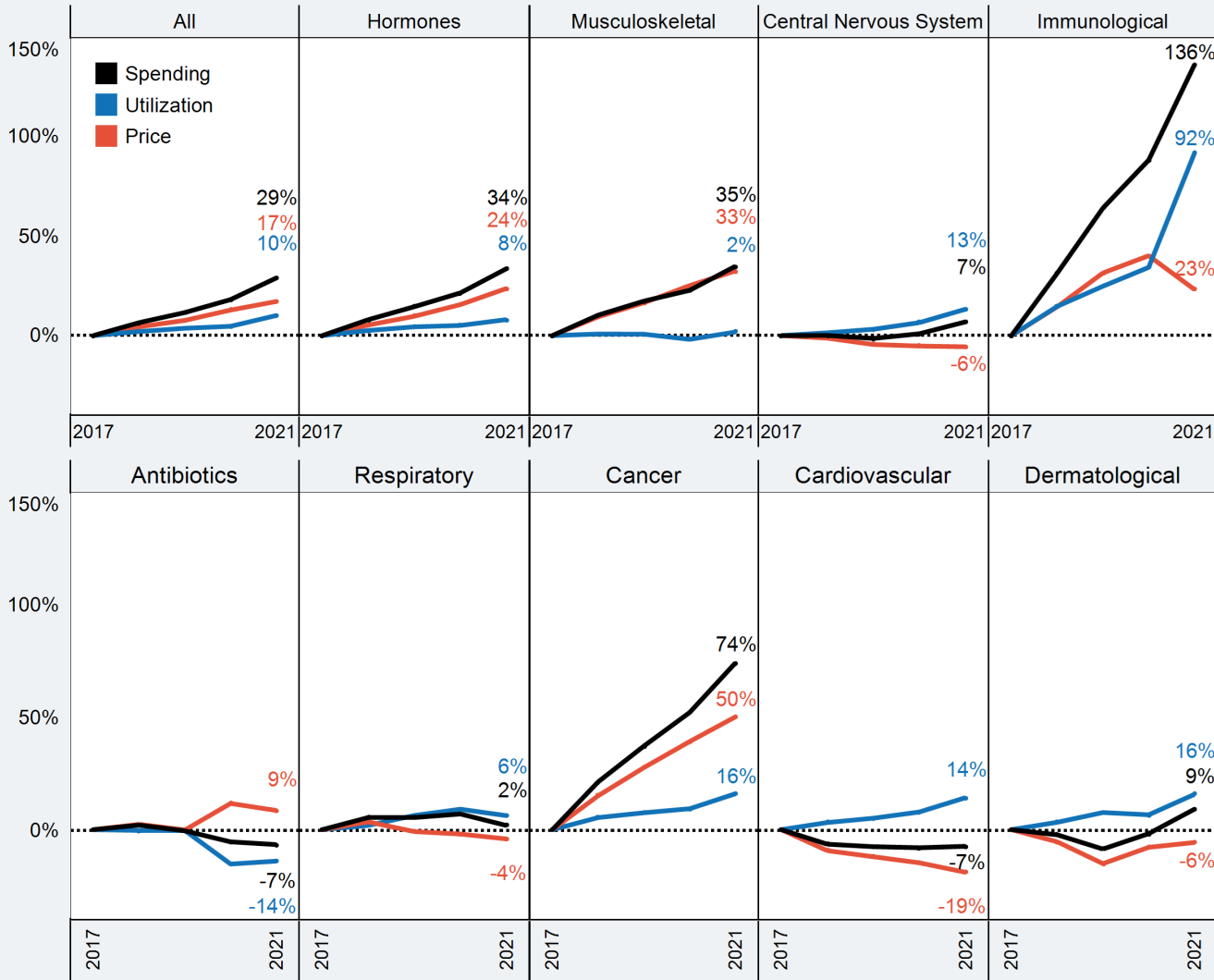




Figure 40: Share of Prescription Drug Days Supplied

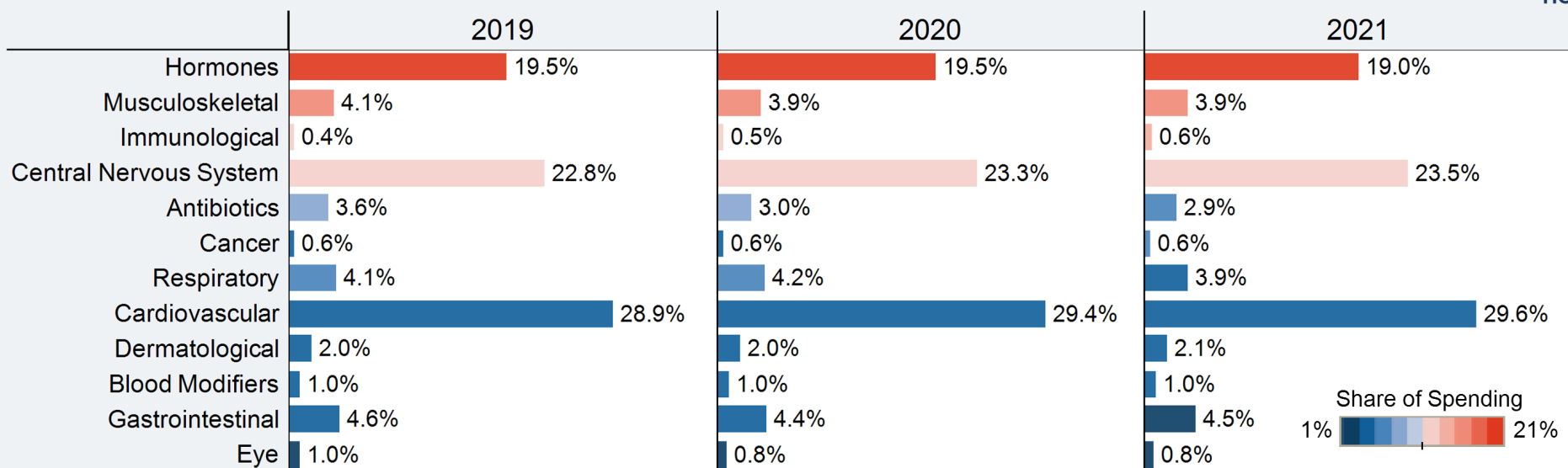
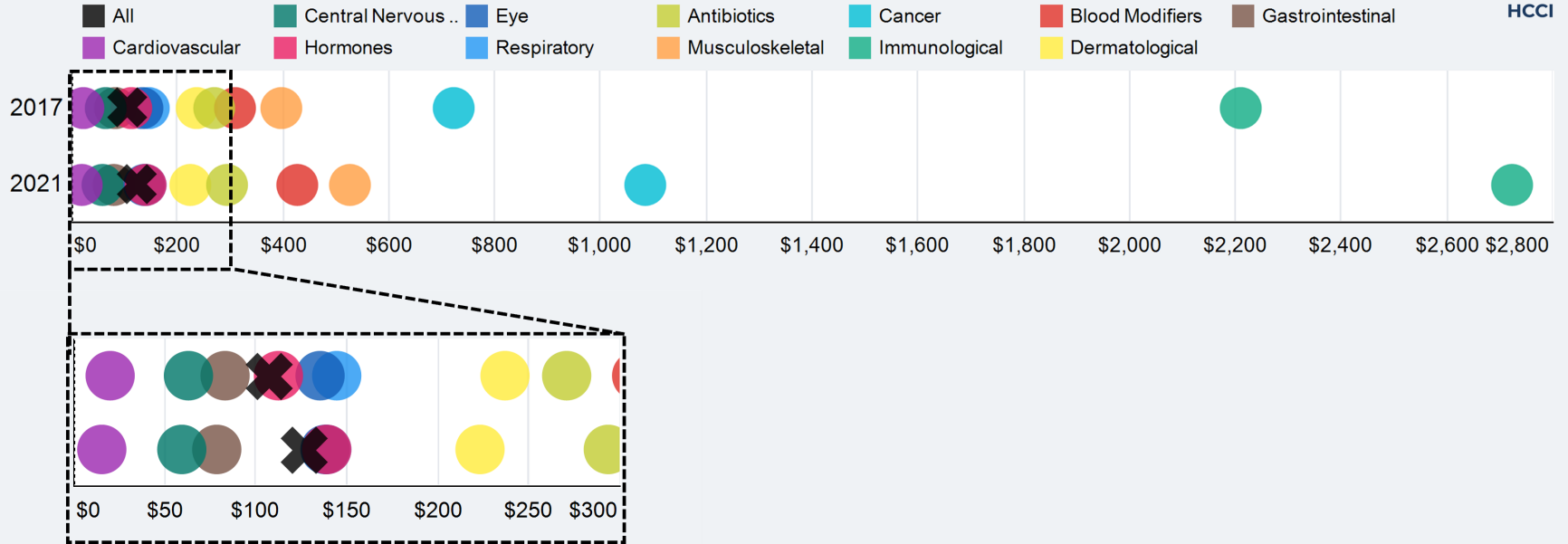


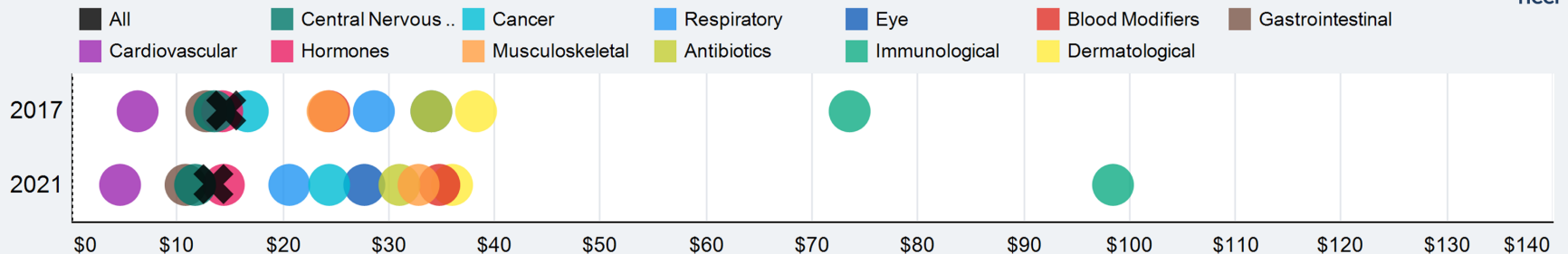


Figure 41: Average Point-of-Sale Prices for Prescription Drugs 30-Day Supply in 2017 and 2021



Health Care Cost & Utilization Report 2021 | healthcostinstitute.org

Figure 42: Average Out-of-Pocket Payments for Prescription Drugs 30-Day Supply in 2017 and 2021

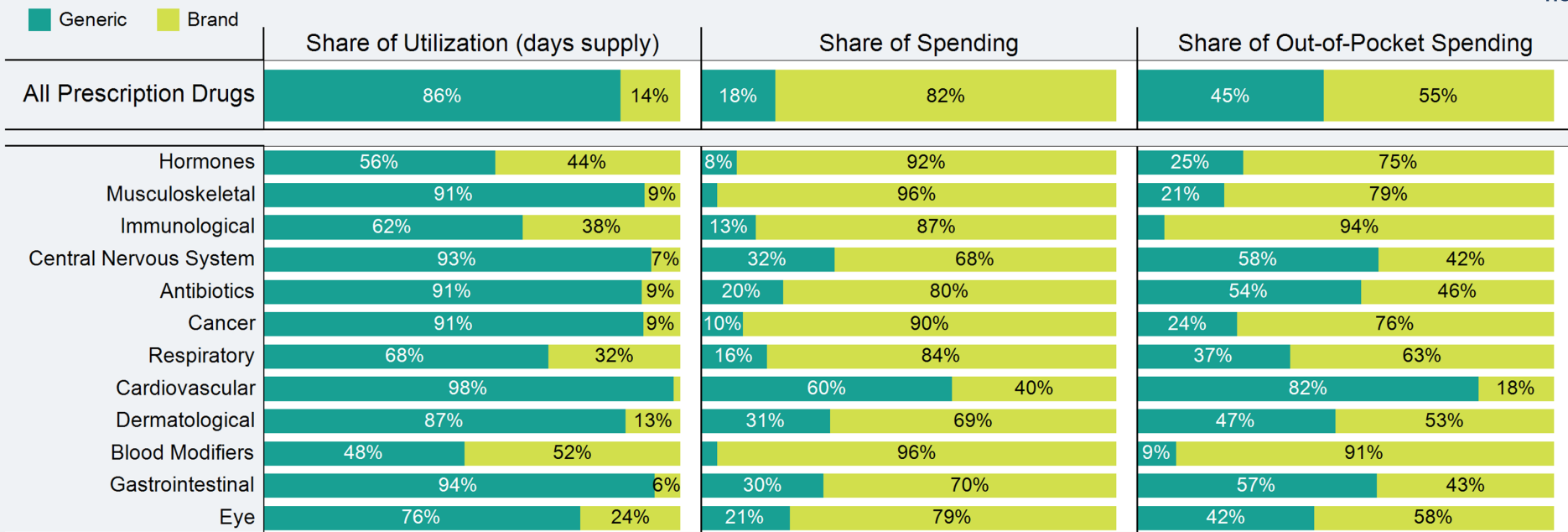


Health Care Cost & Utilization Report 2021 | healthcostinstitute.org



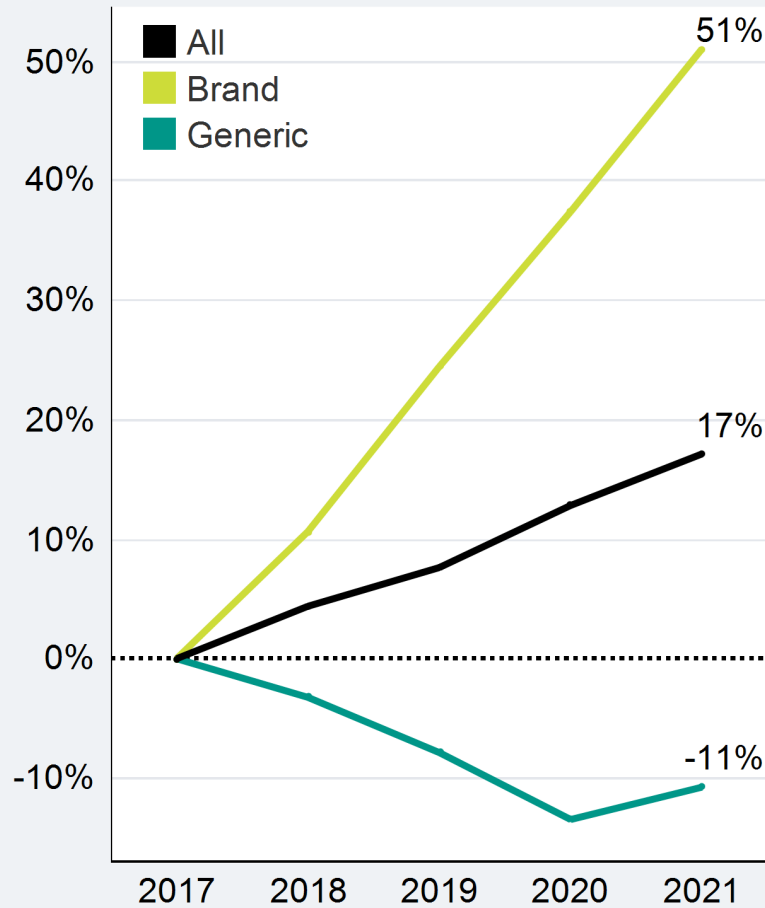


**Figure 43: Share of Prescription Drug Utilization, Spending, and Out-of-Pocket Spending on Brand and Generic Drugs in 2021**



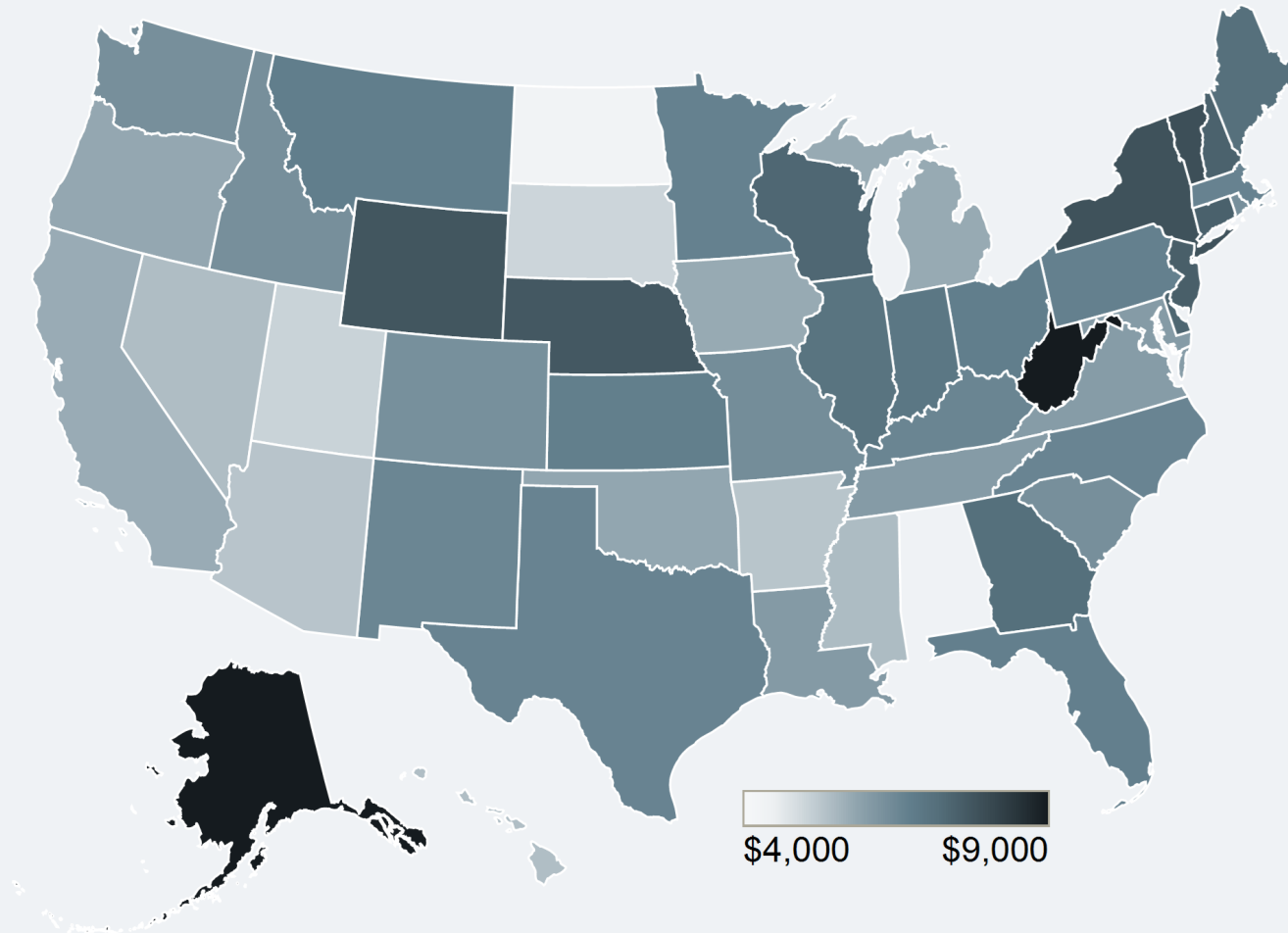


**Figure 44: Cumulative Percent Change in Brand and Generic Prescription Drug Point-of-Sale Prices**



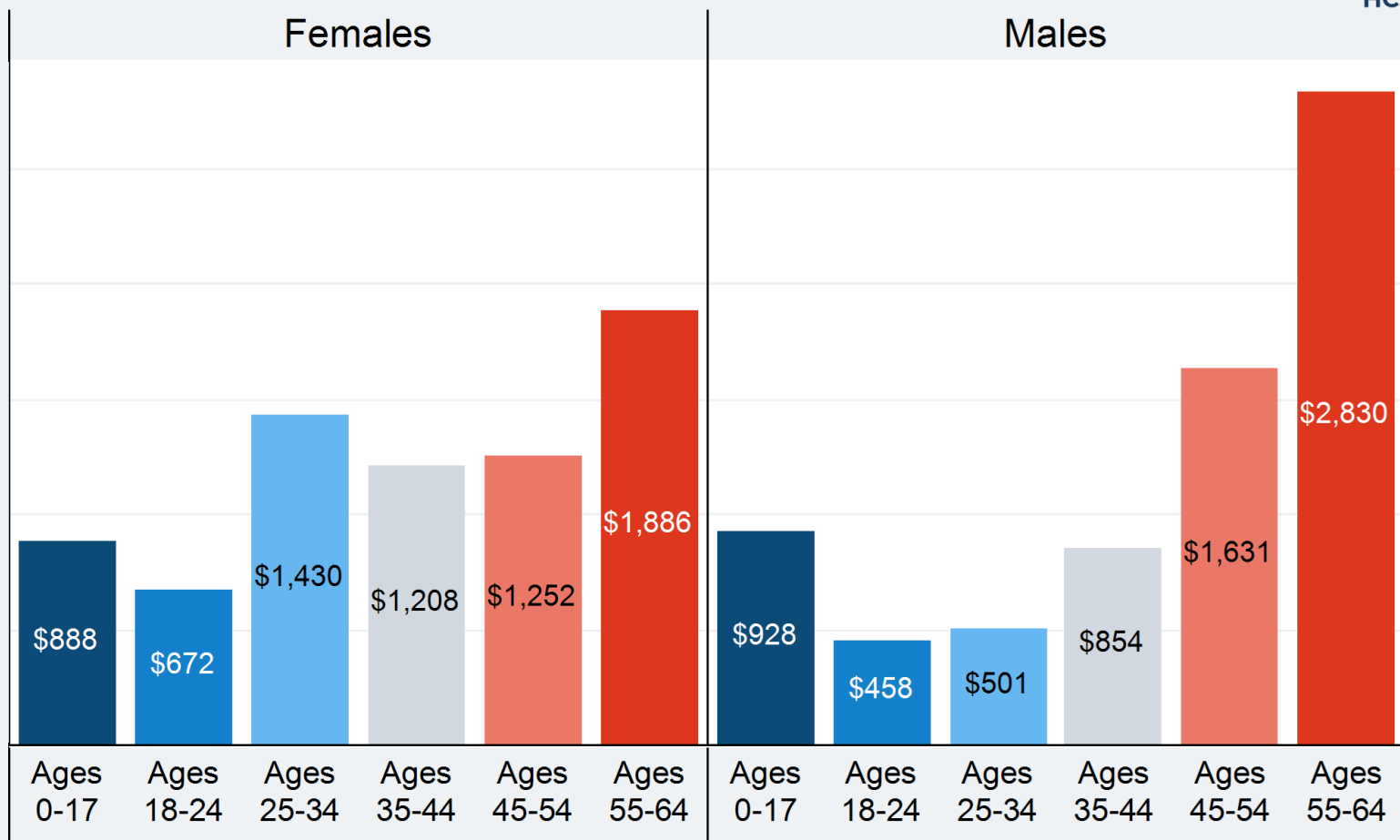


**Figure 45: Total Spending per Person by State in 2021**





**Figure 46:** Inpatient Facility Spending per Person by Age and Sex in 2021



Health Care Cost & Utilization Report 2021 | [healthcostinstitute.org](http://healthcostinstitute.org)



**Figure 47: Share of Professional E&M Services Spending**

